



OPEN SERIES MAP

No. D43X6

Scale 1:50,000



1 Ramanagaram, KARNATAKA 2. Bangalore Rural, KARNATAKA 3 Channarayana, KARNATAKA

भारतीय सर्वेक्षण विभाग SURVEY OF INDIA

1st Edition 2011. Price: Rs 103/-

CONVENTIONAL SYMBOLS

Table of conventional symbols for roads, rivers, railways, and other features.

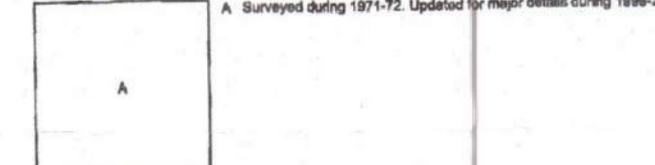
REFERENCE

AV 209 National Highway No. 209

NOTES

Notes regarding map accuracy, scale, and projection.

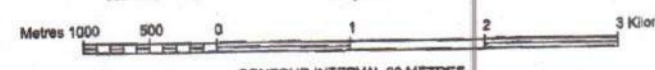
COMPLETION INDEX



Projection - UTM Datum - WGS 84

Magnetic Variation from True North about 2° West in 2005.

Scale 1:50,000



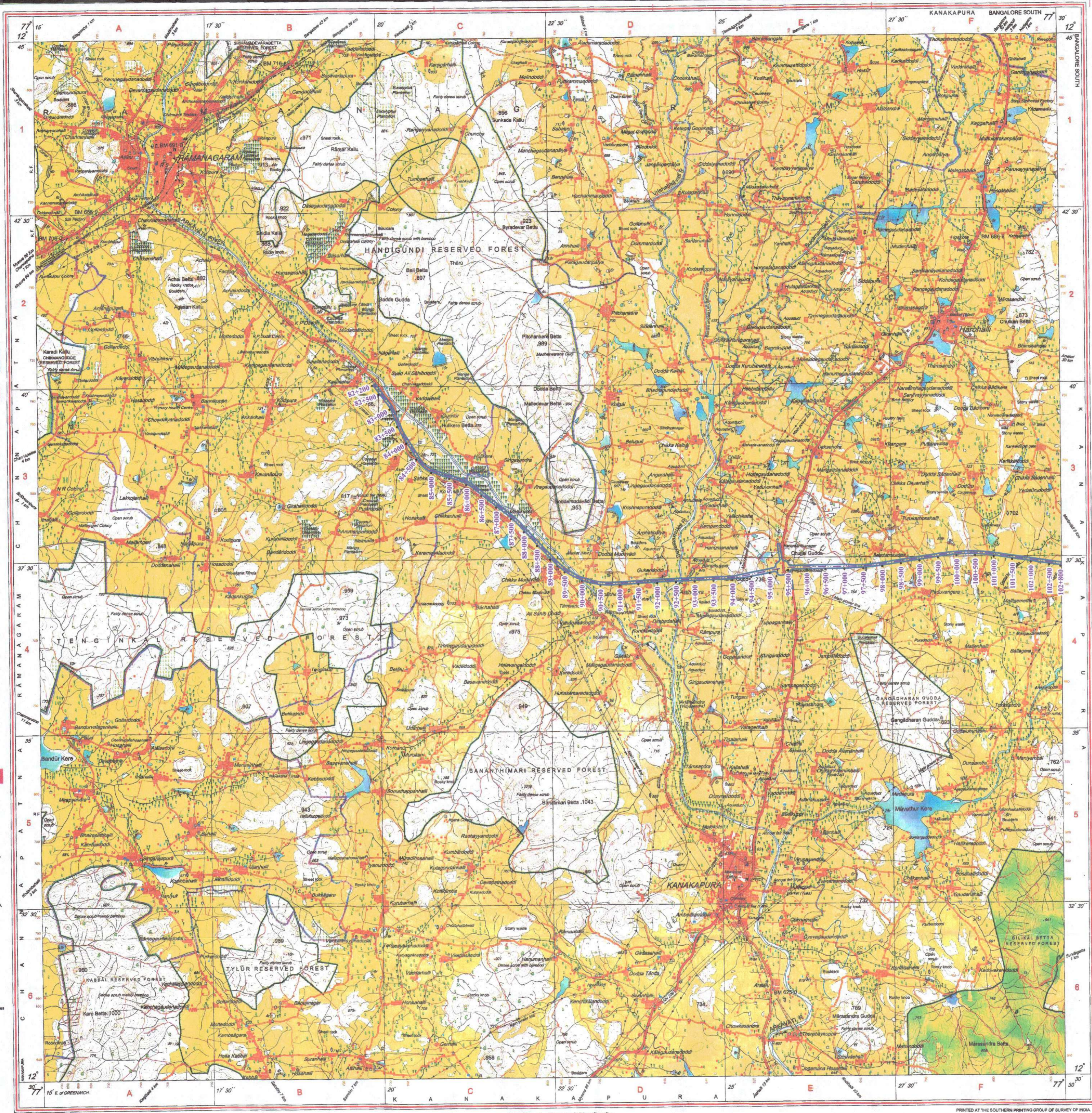
CONTOUR INTERVAL 50 METRES

For further details about the map, please contact Director, Karnataka Geo-Spatial Data Centre, Survey of India, Koramangala II Block, Bangalore.

WEBSITE - www.surveyofindia.gov.in

Reproduction in whole or part by any means is prohibited without the written permission of Survey of India, the National Mapping Agency.

GOVERNMENT OF INDIA COPYRIGHT, 2011.



Map title, scale, and publication information at the bottom of the map frame.



Scale 1:50,000

STRR (Satellite Town Ring Road)

Phase-2

Forest Map

Sheet No.1 of 2

Map Legend

- Legend items: Road Centrelines, PROW



Project information: S.P. S... Project... National Highways Authority of India, Bangalore

Date: 7/17/2020



OPEN SERIES MAP

No. D43X10

Scale 1:50,000

D43X5 (57H05)	D43X9 (57H09)	D43X13 (57H13)
D43X6 (57H06)	D43X10 (57H10)	D43X14 (57H14)
D43X7 (57H07)	D43X11 (57H11)	D43X15 (57H15)

1 Channarayana, TAMIL NADU
2 Channarayana, KARNATAKA
3 Kodur, KARNATAKA
4 Bangalore Rural, KARNATAKA

भारतीय सर्वेक्षण विभाग SURVEY OF INDIA

1st Edition 2011. Price: Rs. 70/-

CONVENTIONAL SYMBOLS

Express highway with toll, with bridge, with distance stone	
Roads, double according to Impression	
Unimproved road, Cart-track, Pack-track with camels, Foot-path	
Streams with track in bed, Underdrain, Canal	
Dams masonry or rock-fill, earthen, Yield	
Submerged roads, small, sharp, Heels	
Water level, natural, Tubewell, Spring, Tanka, perennial, dry	
Hydroelectric and wind turbines	
Railways, broad gauge, double, single with station, under construction	
Railways, other gauges, double, single with distance stone, do.	
Mineral line or tramway, Kin. Cables with tunnel	
Contours with sub-contours, Rocky slopes, Cliffs	
Sea level (Mean Sea Level) (MSL)	
Towns or Villages (Indicated), Capital, Fort	
Other prominent temporary, Tents, Adhok, etc.	
Temples, Churches, Mosques, Light, Towers, Domes	
Lighthouses, Lightships, Buoy, Light, unlighted, Anchorage	
Mines, Vins on hills, Cross, Stone	
Palms, palmgrove, other, Plantain, Coffee, Bamboo, Other trees	
Areas of forest, wooded, Barewood trees	
Boundary, International	
State boundary, International	
Boundary of sub-division, taluk or sub-taluk	
Boundary of village panchayat, uncoloured	
Height, Mean Sea Level, spot, approximate	
Bench-mark, geodetic, levelling, aneroid	
Post office, Telegraph office, Overhead tank	
Rest house or inspection bungalow, Club house, Police station	
Camping ground, Power normal, protected	
Special names, administrative, locality or place	
Health, Dispensary, Veterinary Hospital, Dispensary	
Aerodrome, Helipad, Tourist site	
Power line with pylons surveyed, with poles unsurveyed	

REFERENCE

W.P. NAGAR RESERVE FOREST

NOTES

Heights and contours are in metres and above Indian mean sea level.

Contours are approximate.

A double height e.g. 40 represents the approximate height in metres, between the top and bottom of a steep slope.

The contour lines, numbers along them and heights are shown in short type, e.g. 2' where reference numbers are shown in upright type, e.g. 5'

Tube-wells are numerous throughout the sheet, only the important ones have been shown.

Unimproved roads and cart-tracks in the sheet are generally made of dry season.

Temples with gopurams are shown thus.

COMPILATION INDEX

A. Surveyed during 1957-58. Updated for major details during 2011-12.

Projection - UTM Datum - WGS 84

Magnetic Variation from True North about 2° West in 2005.

(Average change negligible)

Scale 1:50,000

CONTOUR INTERVAL 20 METRES

For further details about this map, please contact

Director

Tamil Nadu, Puducherry & Andaman Nicobar Islands Geo-Spatial Data Centre

Survey of India, Guindy

Chennai.

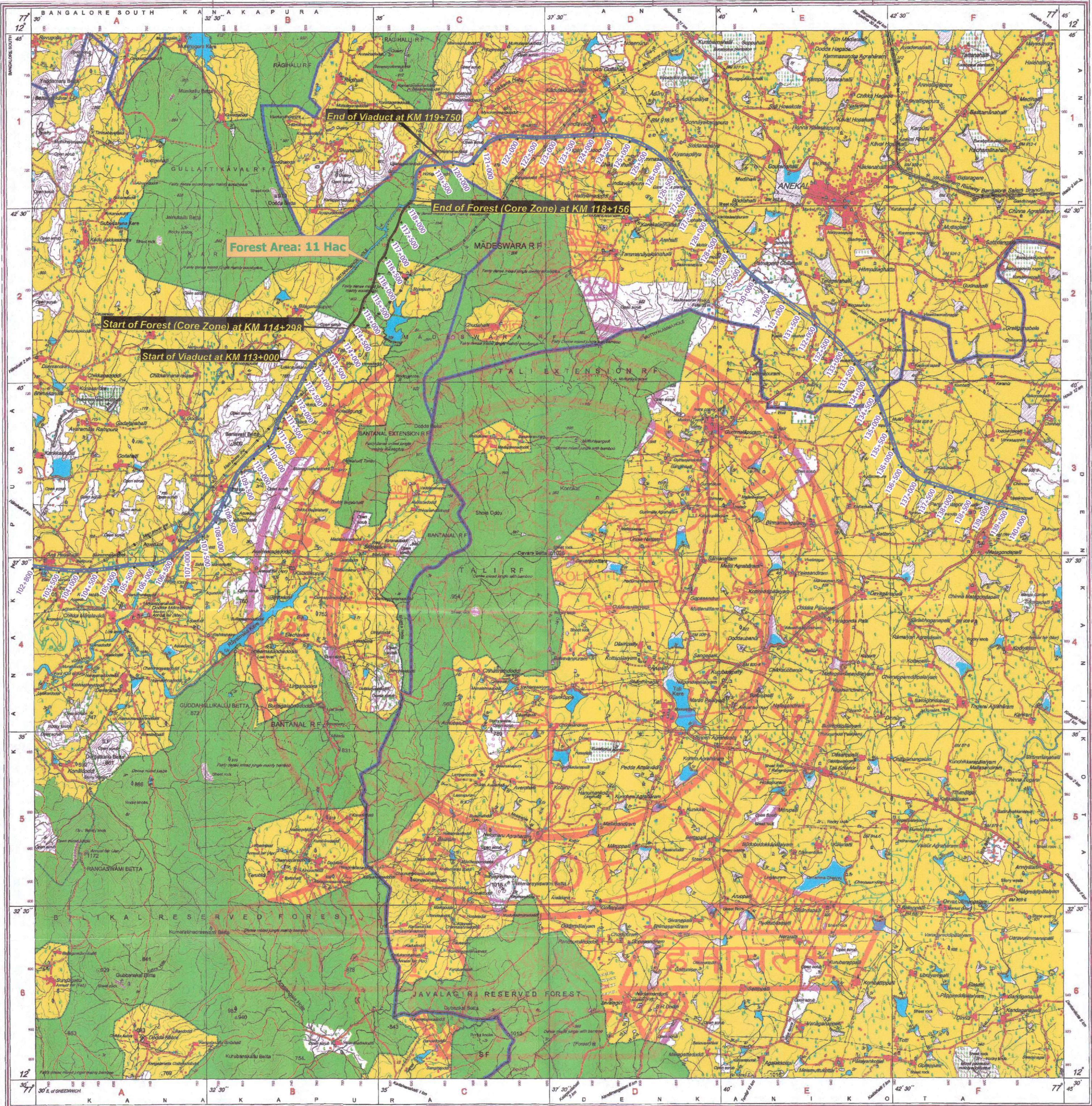
WEBSITE - www.surveyofindia.gov.in

Reproduction in whole or part by any means is prohibited

without the written permission of Survey of India, the

National Mapping Agency.

GOVERNMENT OF INDIA COPYRIGHT, 2011.



STRR (Satellite Town Ring Road) Phase-2

Forest Map Sheet No.2 of 2

Map Legend

- Road Centrelines
- PROW



S.P. Somashekar General Manager (Tech) Project National Highways Authority of India P.U., Bangalore Date: 7/17/2020