

| LIST OF POINTS | | | | | | |
|----------------|------------|--------------------------|--------------|------------|------------------|---------------------|
| Sl No. | MANHOLE ID | DRAIN Closed(C) /Open(O) | MSL LEVEL | | DRAIN DIMENSIONS | |
| | | | Drain Top(m) | Invert (m) | Road Edge (m) | Width (m) Depth (m) |
| 1 | A1 (OL) | C | 6.094 | 5.414 | 6.153 | 1.100 0.470 |
| 2 | A2 | C | 6.026 | 5.046 | 6.005 | 0.920 0.870 |
| 3 | A3 | C | 6.264 | 5.454 | 6.269 | 0.980 0.680 |
| 4 | A4 | C | 6.685 | 5.875 | 6.620 | 0.780 0.700 |
| 5 | A5 | C | 6.430 | 5.820 | 6.418 | 0.890 0.520 |
| 6 | A6 | C | 6.409 | 5.829 | 6.485 | 0.710 0.500 |
| 7 | B1 (OL) | C | 5.388 | 4.118 | 6.292 | 1.060 1.090 |
| 8 | B2 | C | 6.166 | 5.416 | 7.061 | 0.830 0.570 |
| 9 | B3 | C | 6.344 | 5.534 | 7.284 | 0.850 0.630 |
| 10 | B4 | C | 6.385 | 5.495 | 6.311 | 0.990 0.730 |
| 11 | C1 (OL) | C | 5.455 | 4.765 | 5.889 | 0.820 0.510 |
| 12 | C2 | C | 5.371 | 4.507 | 5.948 | 0.910 0.684 |
| 13 | C3 | C | 4.778 | 4.088 | 5.012 | 0.990 0.510 |
| 14 | C4 | C | 4.981 | 4.051 | 5.048 | 1.090 0.750 |
| 15 | C5 | C | 4.838 | 3.918 | 5.040 | 1.100 0.740 |
| 16 | C6 | C | 5.503 | 4.593 | 5.625 | 0.870 0.730 |
| 17 | C7 | C | 5.578 | 4.768 | 5.450 | 0.870 0.630 |
| 18 | C8 | C | 5.582 | 4.992 | 5.327 | 0.910 0.410 |
| 19 | C9 | C | 5.468 | 4.828 | 5.495 | 0.780 0.460 |
| 20 | C10 | C | 5.558 | 5.078 | 5.426 | 0.810 0.300 |
| 21 | D1 (OL) | C | 5.385 | 4.005 | 5.199 | 0.780 1.170 |
| 22 | D2 | C | 5.824 | 4.624 | 6.200 | 1.100 1.070 |
| 23 | D3 | C | 6.076 | 5.426 | 6.265 | 0.580 0.470 |
| 24 | E1 | C | 5.236 | 4.326 | 5.283 | 0.680 0.780 |
| 25 | E2 | C | 5.546 | 4.696 | 5.470 | 0.700 0.730 |

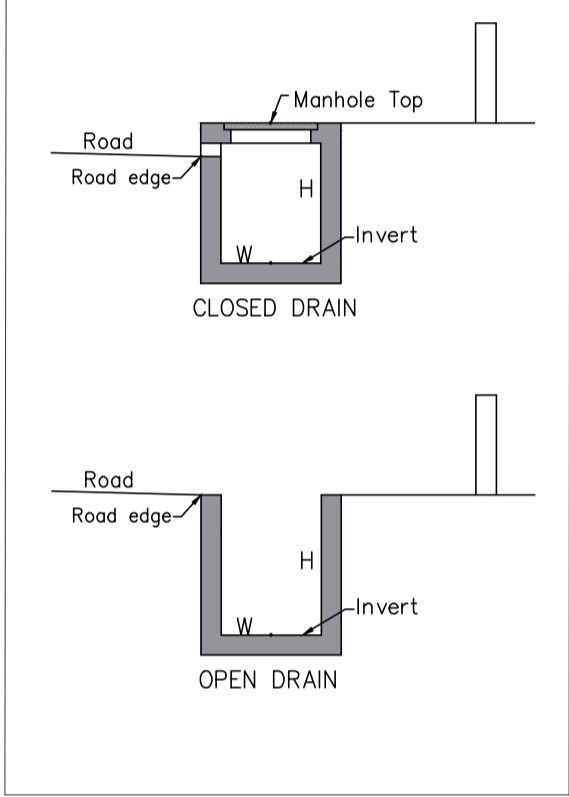
LEGEND

Drain Outlet

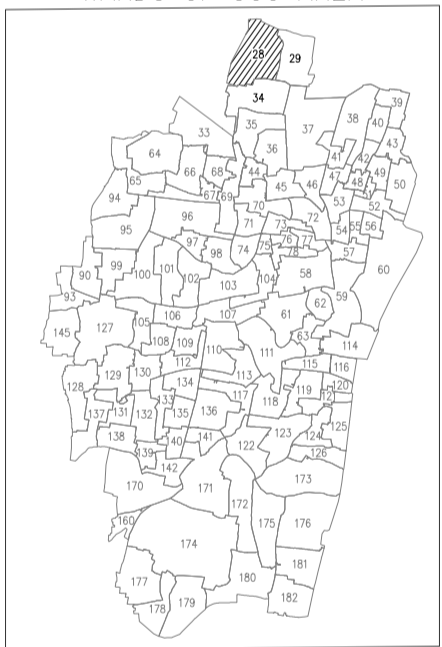
Drain With Reverse Gradient

"-" : Manhole's Inside not Accessible

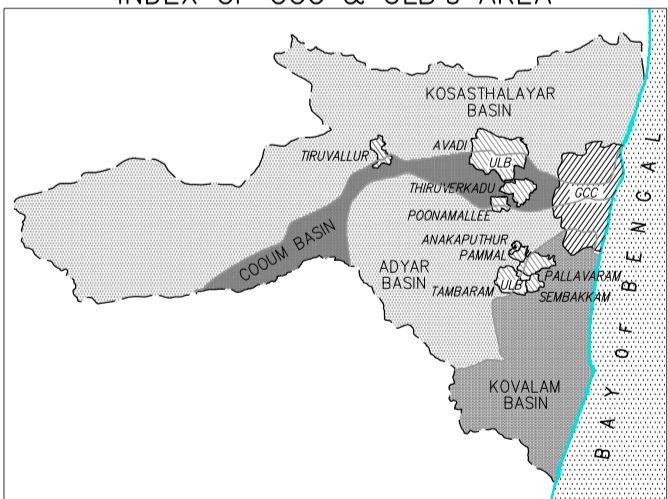
KEY PLAN



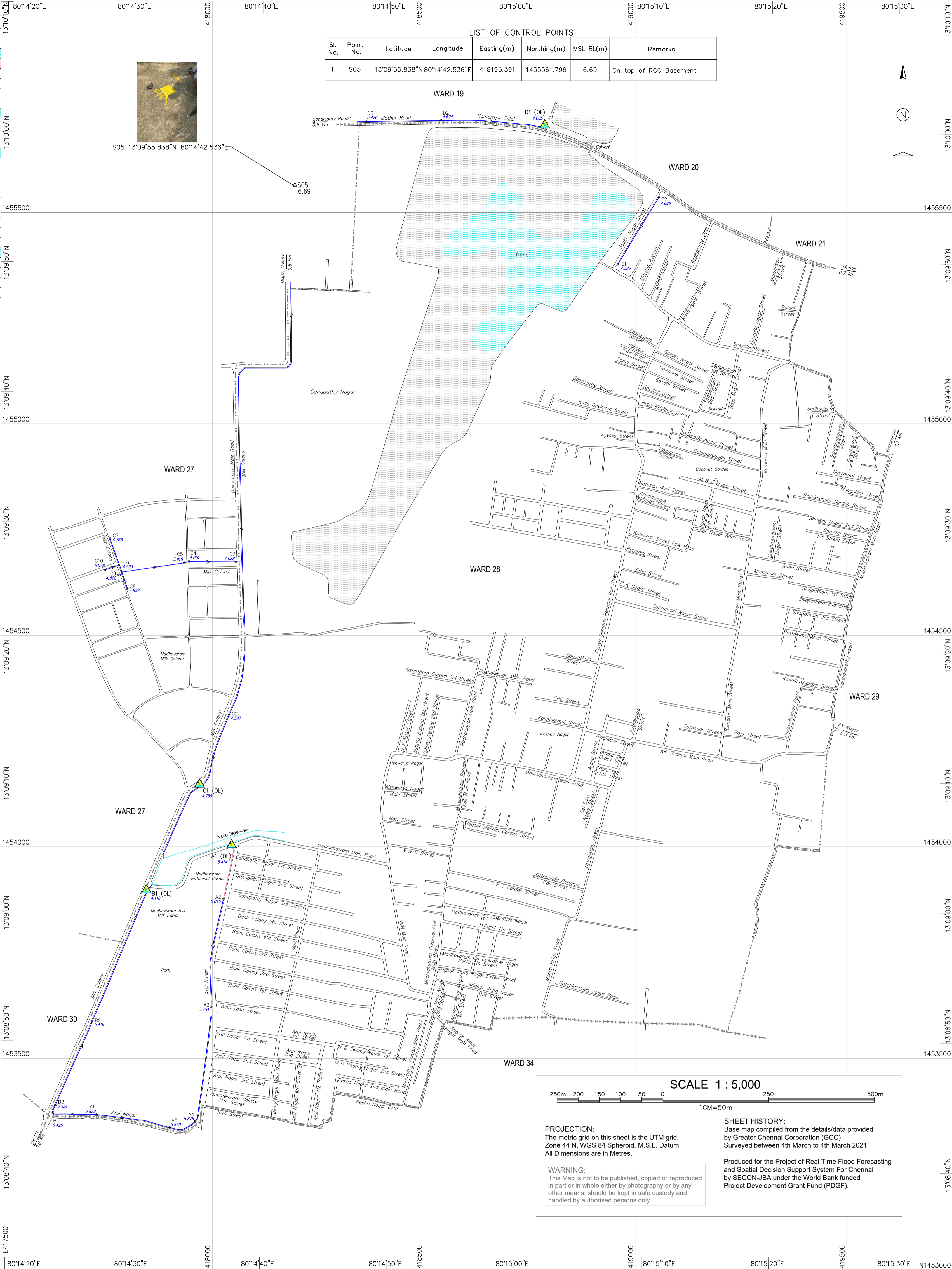
WARDS OF GCC AREA



INDEX OF GCC & ULB's AREA



| LIST OF CONTROL POINTS | | | | | | |
|------------------------|-----------|----------------|----------------|------------|-------------|-----------|
| Sl. No. | Point No. | Latitude | Longitude | Easting(m) | Northing(m) | MSL RL(m) |
| 1 | S05 | 13°09'55.838"N | 80°14'42.536"E | 418195.391 | 1455561.796 | 6.69 |



Roads: main; others; mud. Cart track.

Temple. Chhatri. Shrine. Mosque. Idgah. Tomb. Church.

Railways: broad gauge with station; bridge; metro.

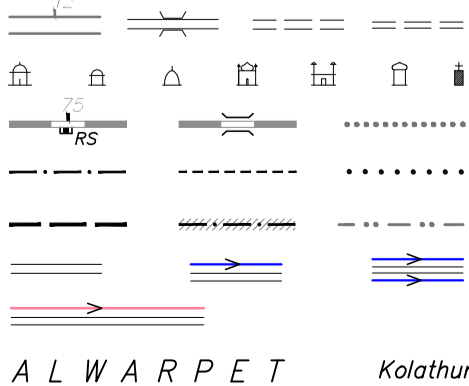
Boundary: state; district; taluk.

Boundary: CMA; zone; ward.

Roads: without drain; with oneside drain; with both side drain.

Road with reverse gradient drain.

Spaced names: locality; village.



Drains: stormwater; feeder with flow direction. Invert level.

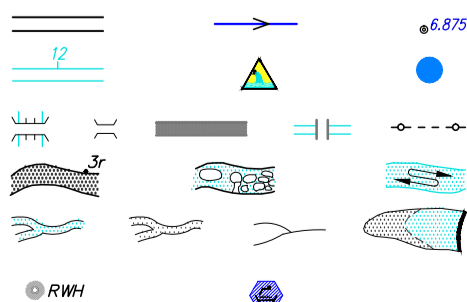
Canal. Outlet. Inundated area by previous flood.

Bridge with piers. Culvert. Flyover. Subway. Sewage line.

River: dry with water channel; with island & rocks. Tidal river.

Streams: perennial; non perennial; Single line: defined. Tank.

Rain water Harvesting. Stormwater pumping station.



| | | | | |
|----------------------|--|-------------|------------------|--------|
| CLIENT | GREATER CHENNAI CORPORATION (GCC) REPRESENTING COMMISSIONERATE OF REVENUE ADMINISTRATION AND DISASTER MANAGEMENT | | | |
| FUNDED BY | PROJECT DEVELOPMENT GRANT FUND (PDGF) (Managed by Tamil Nadu Urban Infrastructure Financial Services Limited) | | | |
| PROJECT | PLANNING, SETTING UP AND OPERATIONALIZING REAL TIME FLOOD FORECASTING SPATIAL DECISION SUPPORT SYSTEM FOR CHENNAI | | | |
| TITLE | BASE MAP - STORM WATER DRAIN WARD No. 28, ZONE III - MADHAVARAM | | | |
| PROJECT CONSULTANTS | SECON - JBA Consulting (India) (U.K.) JV | | | |
| SHEET No. 114 OF 114 | SCALE 1:5000 | DRAWING No. | CFM/SWD/WARD-114 | REV. 0 |