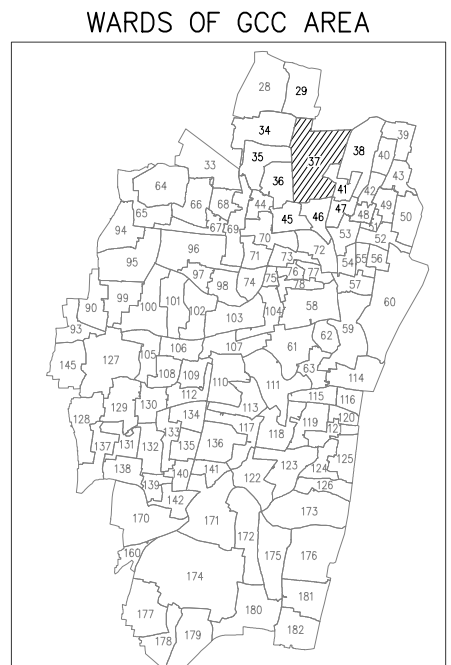
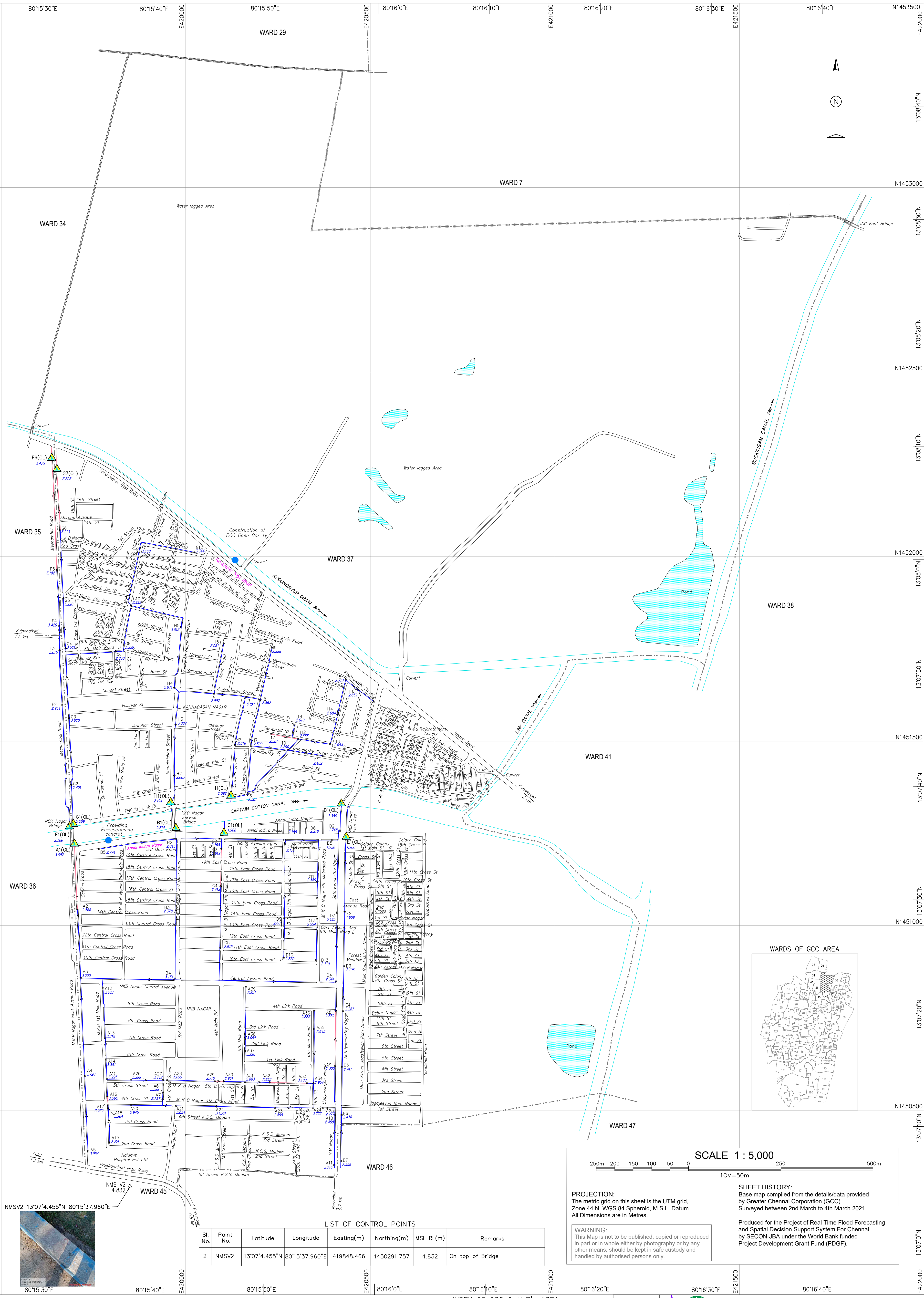
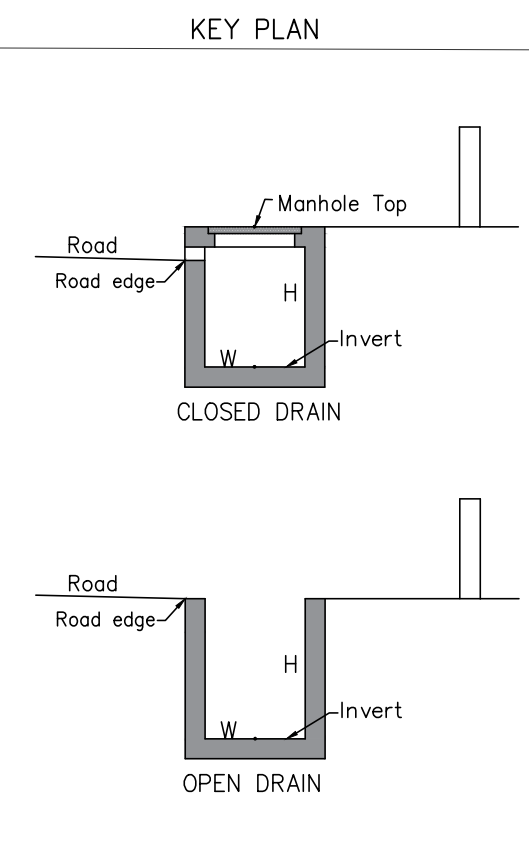


LIST OF POINTS							
SI No.	MANHOLE ID	DRAIN Closed(O) /Open(O)	MSL LEVEL			DRAIN DIMENSIONS	
			Drain Top(m)	Invert (m)	Road Edge (m)	Width (m)	Depth (m)
1	A1 (OL)	C	4.497	3.097	3.232	1.600	1.250
2	A2	C	3.766	2.566	3.639	0.900	1.000
3	A3	C	4.470	3.200	4.349	0.900	1.070
4	A4	C	4.820	3.720	4.631	0.900	0.900
5	A5	C	5.054	3.954	4.648	0.950	0.900
6	A6	C	4.099	3.399	3.939	1.000	0.450
7	A7	C	4.187	3.237	4.012	0.850	0.250
8	A8	C	3.839	2.559	3.674	1.200	0.930
9	A9	C	3.650	2.300	3.550	1.250	1.050
10	A10	C	3.838	2.580	3.666	1.250	1.130
11	A11	C	3.816	2.516	3.643	1.200	1.050
12	A12	C	4.108	3.408	3.939	1.100	0.500
13	A13	C	4.115	3.315	4.123	1.000	0.600
14	A14	C	4.151	3.351	4.141	0.800	0.550
15	A15	C	4.205	3.225	4.217	1.200	0.730
16	A16	C	4.242	3.592	4.139	0.800	0.450
17	A17	C	4.332	3.232	4.227	1.100	0.850
18	A18	C	4.414	3.264	4.121	1.200	0.900
19	A19	C	4.451	3.351	4.257	1.200	0.850
20	A20	C	4.095	2.945	4.063	1.200	0.950
21	A21	C	4.184	3.034	4.068	1.100	0.900
22	A22	C	4.129	3.029	3.903	1.100	0.850
23	A23	C	4.145	2.895	3.998	1.000	1.000
24	A24	C	4.042	3.222	4.032	0.900	0.570
25	A25	C	3.977	2.977	3.902	1.200	0.750
26	A26	C	4.249	3.299	4.215	1.000	0.700
27	A27	C	4.148	3.448	4.025	1.000	0.450
28	A28	C	3.979	3.099	3.991	1.000	0.630
29	A29	C	3.816	2.716	3.811	1.200	0.850
30	A30	C	4.111	2.961	3.910	1.000	0.900
31	A31	C	3.983	2.883	3.676	1.200	0.850
32	A32	C	3.873	2.693	3.765	1.020	0.930
33	A33	C	3.817	3.100	3.632	1.200	0.467
34	A34	C	3.800	3.100	3.705	1.200	0.450
35	A35	C	3.695	2.645	3.672	1.000	0.550
36	A36	C	3.785	2.685	3.626	1.000	0.600
37	A37	C	3.920	3.220	3.642	1.200	0.450
38	A38	C	3.894	3.094	3.754	1.200	0.550
39	A39	C	3.831	2.831	3.910	0.800	0.750
40	B1 (OL)	C	3.314	2.314	3.238	1.500	0.750
41	B2	C	3.293	2.043	3.100	1.000	1.050
42	B3	C	3.578	2.378	3.620	1.000	0.950
43	B4	C	4.251	3.151	4.055	1.000	0.900
44	B5	C	3.374	2.774	3.140	1.500	0.400
45	C1 (OL)	C	3.158	1.908	3.075	1.500	1.050
46	C2	C	3.268	2.168	3.113	1.000	0.900
47	C3	C	3.219	2.819	3.262	1.100	0.200
48	C4	C	3.682	2.412	3.501	0.900	1.000
49	C5	C	4.115	2.915	4.127	0.900	1.000
50	D1 (OL)	C	2.886	1.386	2.879	2.000	1.300
51	D2	C	2.948	1.748	2.636	2.000	0.950
52	D3	C	3.295	2.195	3.023	1.000	0.900
53	D4	C	3.444	2.341	3.433	1.100	0.900
54	D5	C	2.838	1.928	2.824	1.200	0.750
55	D6	C	3.218	2.218	3.257	1.100	0.800
56	D7	C	3.056	2.156	3.012	1.000	0.650
57	D8	C	3.087	2.177	3.041	1.100	0.660
58	D9	C	3.401	2.601	3.675	1.100	0.600
59	D10	C	3.670	2.850	3.675	1.100	0.620
60	D11	C	3.389	2.389	3.384	1.200	0.800
61	D12	C	3.504	2.554	3.406	1.100	0.750
62	D13	C	3.610	2.710	3.493	1.100	0.700
63	E1 (OL)	C	3.122	1.980	2.808	2.000	1.170
64	E2	C	3.209	1.909	2.994	1.500	1.100
65	E3	C	3.489	2.199	3.326	1.100	1.093
66	E4	C	3.487	2.287	3.525	1.100	1.000
67	E5	C	3.741	2.411	3.623	1.200	1.080
68	E6	C	3.766	2.436	3.651	1.200	1.080
69	E7	C	3.859	2.359	3.632	1.200	1.000
70	F1 (OL)	C	3.796	2.386	3.390	0.201	1.009
71	F2	C	4.154	2.954	3.979	0.901	0.990
72	F3	C	4.117	3.015	4.047	0.801	0.916
73	F4	C	4.321	3.420	4.060	0.750	0.693
74	F5	C	4.284	3.182	4.251	0.910	0.592
75	F6 (OL)	C	4.583	3.475	4.465	0.920	0.825
76	G1 (OL)	C	3.521	2.209	3.358	1.201	0.707
77	G2	C	3.713	2.401	3.630	1.045	0.817
78	G3	C	4.141	3.820	3.970	0.901	0.116
79	G4	C	4.216	3.521	4.143	0.812	0.485
80	G5	C	4.337	3.228	4.126	0.801	0.519
81	G6	C	4.594	3.213	4.341	0.901	0.798
82	G7 (OL)	C	4.488	3.505	4.430	1.025	0.794
83	G8	C	3.950	2.830	3.976	0.701	0.899
84	G9	C	4.090	3.089	3.716	0.953	0.491
85	G10	C	3.907	2.992	3.805	0.650	0.705
86	G11	C	4.153	3.168	4.147	0.919	0.800
87	G12	C	4.054	3.344	4.021	1.025	0.475
88	H1 (OL)	C	3.606	2.194	3.897	1.015	0.852
89	H2	C	3.570	2.687	3.447	0.908	0.701
90	H3	C	3.781	3.089	3.716	0.953	0.491
91	H4	C	3.789	2.871	3.723	0.920	0.729
92	H5	C	3.904	3.013	3.526	0.901	0.702
93	I1 (OL)	C	3.457	2.092	3.150	1.022	1.160
94	I2	C	3.529	2.616	3.499	0.815	0.653
95	I3	C	3.684	2.782	3.583	0.820	0.694
96	I4	C	3.898	2.997	3.834	0.912	0.713
97	I5	C	3.881	3.061	3.383	0.805	0.610
98	I6	C	3.257	2.501	3.271	0.855	0.571
99	I7	C	3.311	2.509	3.245	0.810	0.551
100	I8	C	3.577	2.862	3.469	0.807	0.434
101	I9	C	3.623	2.998	3.567	0.775	0.285
102	I10	C	3.215	2.290	3.184	0.691	0.574
103	I11	C	3.292	2.482	3.224	0.872	0.625
104	I12	C	3.491	2.688	3.428	0.810	0.602
105	I13	C	3.436	2.654	3.358	0.791	0.467
106	I14	C	3.404	2.684	3.383	0.702	0.504
107	I15	C	3.418	2.713	3.246	0.783	0.454
108	I16	C	3.368	2.859	3.288	0.805	0.281
109	I17	C	3.483	2.381	3.422	0.807	0.500
110	I18	C	3.461	2.610	3.394	0.801	0.543

LEGEND
 Drain Outlet
 Drain With Reverse Gradient
 "..." : Manhole's inside not Accessible



LIST OF CONTROL POINTS							
SI. No.	Point No.	Latitude	Longitude	Easting(m)	Northing(m)	MSL RL(m)	Remarks
2	NMSV2	13°07'4.455"N	80°15'37.960"E	419848.466	1450291.757	4.832	On top of Bridge

SCALE 1 : 5,000
 250m 200 150 100 50 0 250 500m
 1CM=50m

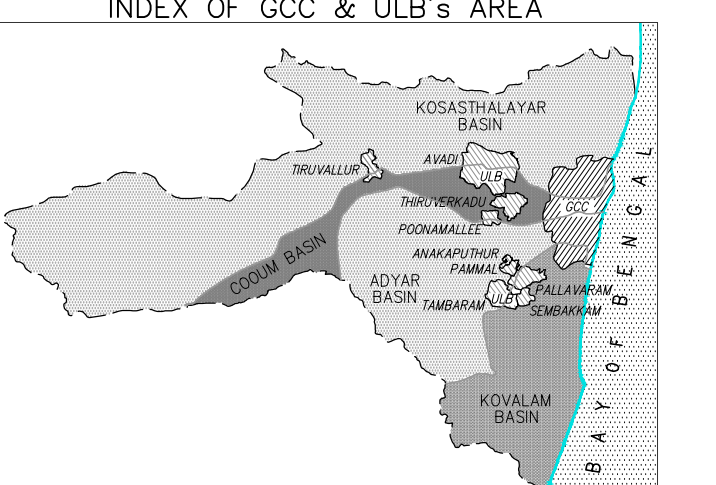
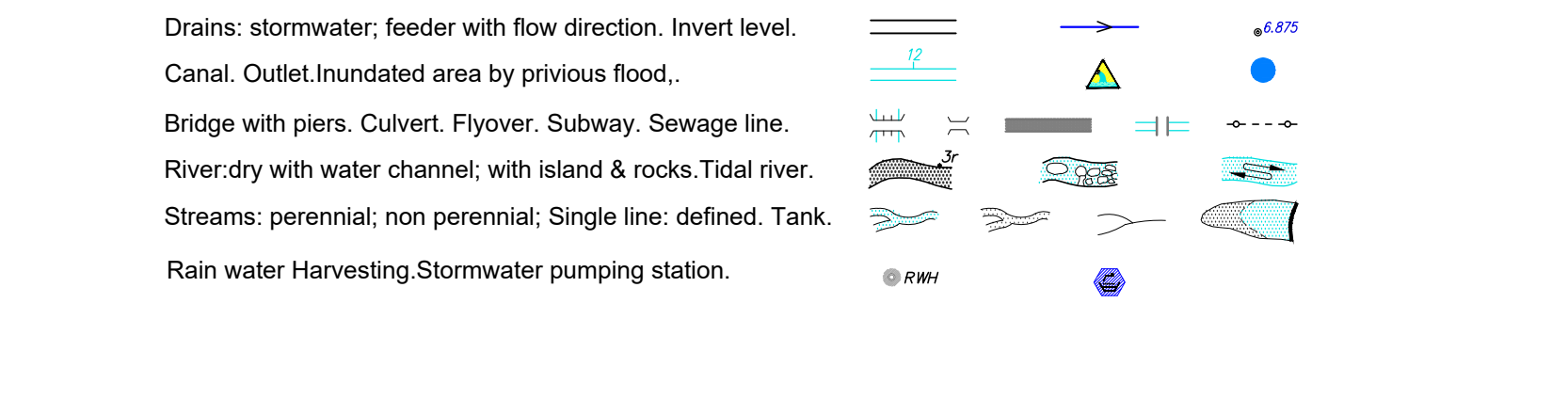
PROJECTION:
 The metric grid on this sheet is the UTM grid, Zone 44 N, WGS 84 Spheroid, M.S.L. Datum. All Dimensions are in Metres.

WARNING:
 This Map is not to be published, copied or reproduced in part or in whole either by photography or by any other means; should be kept in safe custody and handled by authorized persons only.

SHEET HISTORY:
 Base map compiled from the details/data provided by Greater Chennai Corporation (GCC) Surveyed between 2nd March to 4th March 2021 All Dimensions are in Metres.

Produced for the Project of Real Time Flood Forecasting and Spatial Decision Support System For Chennai by SECON-JBA under the World Bank funded Project Development Grant Fund (PDGF).

Roads: main; others; mud. Cart track.
 Temple, Chhatra, Shrine, Mosque, Idgah, Tomb, Church.
 Railways: broad gauge with station; bridge; metro.
 Boundary: state, district, taluk.
 Boundary: CMA; zone; ward.
 Roads: without drain; with onside drain; with both side drain.
 Road with reverse gradient drain.
 Spaced names: locality, village.



CLIENT	GREATER CHENNAI CORPORATION (GCC) REPRESENTING COMMISSIONERATE OF REVENUE ADMINISTRATION AND DISASTER MANAGEMENT
FUNDED BY	PROJECT DEVELOPMENT GRANT FUND (PDGF) (Managed by Tamil Nadu Urban Infrastructure Financial Services Limited)
PROJECT	PLANNING, SETTING UP AND OPERATIONALIZING REAL TIME FLOOD FORECASTING SPATIAL DECISION SUPPORT SYSTEM FOR CHENNAI
TITLE	BASE MAP - STORM WATER DRAIN WARD No. 37, ZONE IV - TONDIPART
PROJECT CONSULTANTS	SECON - JBA Consulting (India) (U.K.) JV
SHEET No. 108 OF 114	DRAWING No. CFM/SWD/WARD-108
SCALE 1:5000	REV. 0