

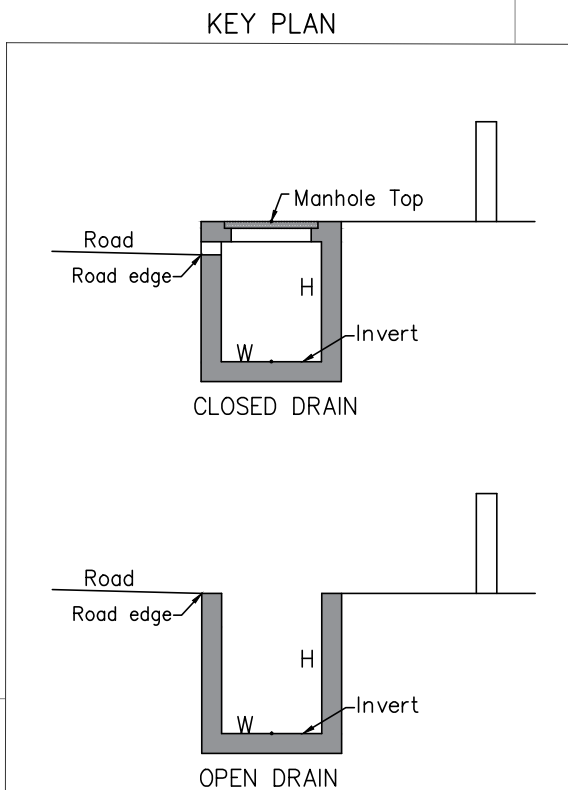
LIST OF POINTS							
SI No.	MANHOLE ID	DRAIN Closed(C) /Open(O)	MSL LEVEL		DRAIN DIMENSIONS		
			Drain Top(m)	Invert (m)	Road Edge (m)	Width (m)	Depth (m)
1	A1 (OL)	C	3.676	2.346	3.769	0.980	1.110
2	A2	C	3.723	2.553	3.808	0.830	0.980
3	A3	C	3.893	2.763	3.882	0.810	0.950
4	A4	C	3.930	2.820	3.810	0.790	0.900
5	A5	C	4.196	3.176	3.990	0.920	0.840
6	A6	C	4.485	3.505	4.326	0.880	0.820
7	A7	C	4.505	3.665	4.416	0.920	0.660
8	A8	C	4.614	3.404	4.473	0.870	0.890
9	A9	C	4.666	4.036	4.628	0.760	0.470
10	A10	C	4.726	4.306	4.636	0.730	0.310
11	A11	C	4.735	4.315	4.714	0.720	0.310
12	A12	C	4.754	4.254	4.765	0.780	0.370
13	A13	C	4.958	4.278	4.936	0.740	0.540
14	B1 (OL)	C	4.383	2.263	4.470	1.190	1.890
15	B2	C	4.106	2.483	4.025	0.820	1.413
16	B3	C	4.393	2.861	4.314	0.820	1.322
17	B4	C	4.060	3.070	4.028	0.820	0.870
18	B5	C	4.546	3.466	4.520	0.820	0.850
19	B6	C	5.410	4.500	5.363	0.780	0.700
20	C1 (OL)	C	5.977	4.867	5.758	0.980	0.870
21	C2	C	5.436	4.016	5.203	0.980	1.180
22	C3	C	5.537	4.297	5.129	1.060	1.030
23	C4	C	5.647	4.427	5.469	1.090	1.100
24	C5	C	5.043	4.153	4.825	1.020	0.630
25	D1 (OL)	C	5.940	4.920	5.549	0.990	0.840
26	D2	C	5.420	4.330	5.081	1.030	0.870
27	D3	C	5.619	4.329	5.185	1.030	1.070
28	D4	C	5.773	4.453	5.327	1.090	1.000
29	D5	C	5.346	4.236	4.884	1.090	0.900
30	E1 (OL)	C	5.274	3.744	5.102	0.620	1.260
31	E2	C	5.463	3.833	5.442	0.880	1.380
32	F1 (OL)	C	4.652	3.662	4.652	0.680	0.840
33	F2	C	5.366	4.506	5.287	0.720	0.690
34	F3	C	5.142	4.582	5.176	0.780	0.380
35	G1 (OL)	C	5.649	4.809	5.021	1.190	0.630
36	G2	C	5.974	5.234	5.627	1.190	0.560
37	H1 (OL)	C	3.507	2.497	3.632	0.940	0.750
38	H2	C	3.753	2.569	3.795	0.780	1.024
39	H3	C	3.754	2.604	3.779	0.820	0.930
40	H4	C	3.709	2.529	3.696	0.840	0.940
41	H5	C	3.710	2.430	3.719	0.810	1.020
42	H6	C	3.912	2.972	3.872	0.880	0.710
43	H7	C	4.198	3.358	4.149	0.890	0.660
44	H8	C	4.401	3.211	4.390	0.720	0.970
45	H9	C	4.149	3.159	4.190	0.720	0.700
46	H10	C	4.247	3.137	4.211	0.780	0.830
47	H11	C	3.706	2.726	3.715	0.730	0.810
48	H12	C	3.715	2.735	3.642	0.780	0.820
49	H13	C	3.723	2.696	3.706	0.710	0.837
50	H14	C	3.894	2.874	3.856	0.680	0.840
51	H15	C	3.901	2.911	3.942	0.780	0.810
52	H16	C	4.021	2.991	4.092	0.720	0.890
53	H17	C	4.204	3.124	4.211	0.790	0.900
54	H18	C	4.746	3.586	4.709	0.880	0.990
55	H19	C	3.765	2.985	3.731	0.850	0.590
56	H20	C	3.940	2.960	3.700	0.860	0.790
57	H21	C	4.016	2.966	3.729	0.840	0.670
58	I1 (OL)	C	4.569	3.469	4.470	0.880	0.880
59	I2	C	4.300	3.270	4.129	0.920	0.850
60	I3	C	4.355	3.435	4.334	0.880	0.730
61	I4	C	4.341	3.403	4.267	0.880	0.748
62	I5	C	4.202	3.412	4.189	0.720	0.030
63	J1 (OL)	C	4.119	3.129	4.055	0.820	0.780
64	J2	C	4.109	2.959	4.134	0.990	0.970
65	J3	C	4.530	3.190	4.402	1.080	1.160
66	J4	C	4.504	3.222	4.489	0.840	1.092
67	J5	C	4.561	3.501	4.430	0.940	0.890
68	J6	C	4.630	3.700	4.514	0.880	0.760
69	J7	C	4.592	3.502	4.562	1.090	0.930
70	J8	C	4.575	3.895	4.468	0.720	0.500
71	J9	C	4.553	3.713	4.546	0.760	0.650
72	J10	C	4.902	4.562	4.848	0.670	0.220
73	J11	C	4.844	4.634	4.742	0.630	0.120
74	J12	C	4.483	3.563	4.456	0.780	0.730
75	J13	C	4.525	3.725	4.441	0.890	0.610
76	J14	C	4.659	3.927	4.552	0.980	0.522
77	J15	C	4.856	4.176	4.795	1.030	0.470
78	J16	C	5.232	3.912	5.001	1.120	1.100
79	J17	C	4.473	3.083	4.413	1.280	1.020
80	J18	C	4.314	3.179	4.378	1.280	0.925
81	J19	C	4.497	3.187	4.459	1.020	1.100
82	J20	C	4.447	3.024	4.425	1.020	1.213
83	J21	C	4.564	3.234	4.469	1.020	1.110
84	J22	C	4.518	3.358	4.359	1.080	0.930
85	J23	C	4.469	3.689	4.422	0.820	0.600
86	J24	C	4.808	3.588	4.708	0.980	1.010
87	J25	C	4.546	3.326	4.501	0.840	1.030
88	J26	C	4.536	3.356	4.452	0.880	1.010
89	J27	C	4.593	3.453	4.483	1.080	0.880
90	J28	C	4.266	3.336	4.280	0.720	0.610
91	J29	C	4.391	3.395	4.366	0.710	0.716
92	J30	C	4.387	3.407	4.353	0.710	0.700
93	J31	C	4.347	3.450	4.291	0.710	0.617
94	J32	C	4.431	3.491	4.325	0.690	0.800
95	J33	C	4.188	3.398	4.041	0.820	0.580
96	J34	C	4.137	3.717	4.050	0.720	0.240
97	K1	C	4.130	2.820	3.984	0.990	0.790
98	K2	C	4.002	2.906	4.004	0.990	0.576
99	K3	C	3.845	3.075	3.902	0.880	0.640
100	K4	C	3.935	3.205	3.923	0.810	0.600

LEGEND

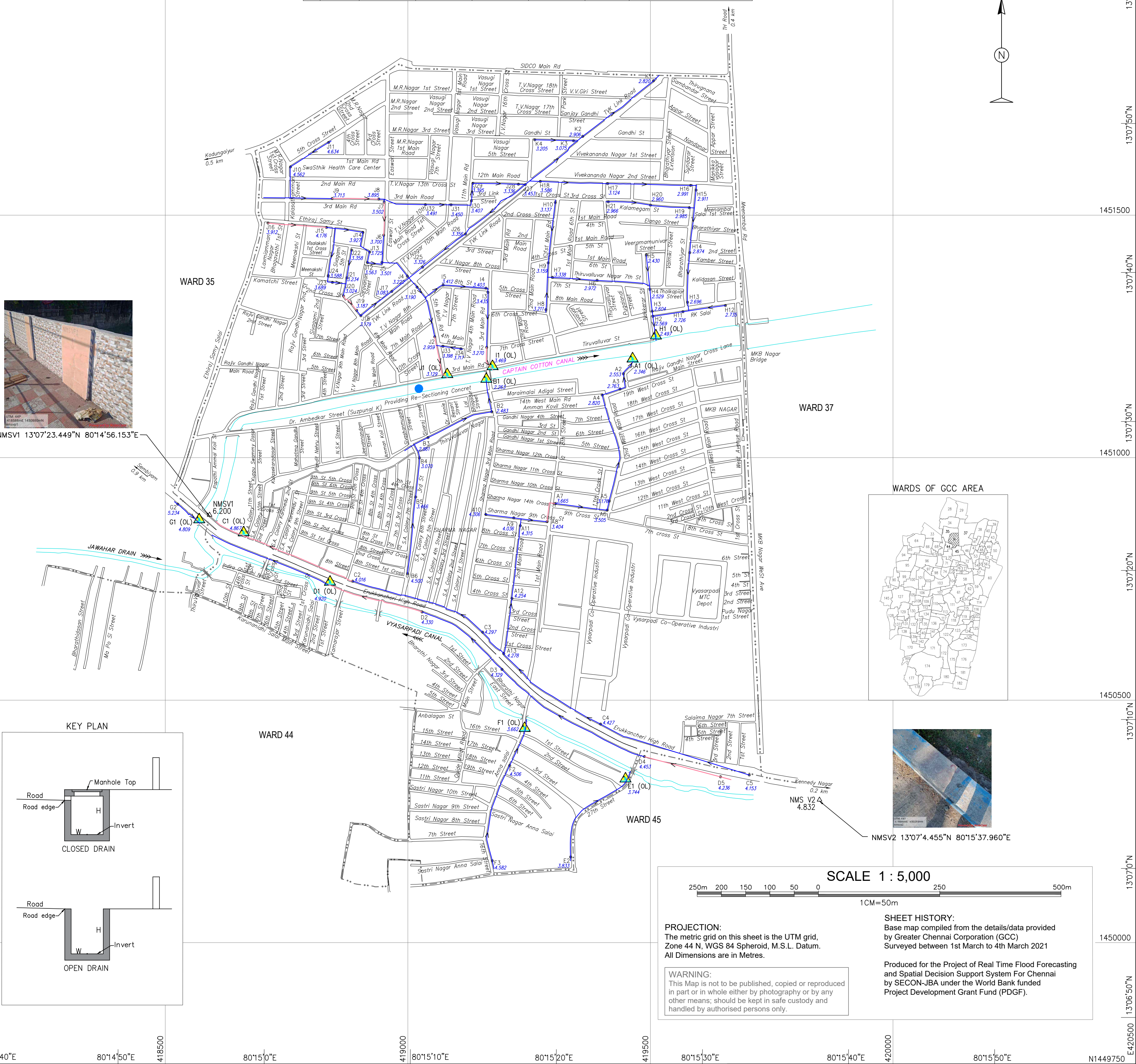
Drain Outlet

Drain With Reverse Gradient

Manhole's Inside not Accessible



Sl. No.	Point No.	Latitude	Longitude	Easting(m)	Northing(m)	MSL RL(m)	Remarks
1	NMSV1	13°07'23.449"N	80°14'56.153"E	418591.350	1450878.991	6.200	On top of Bridge
2	NMSV2	13°07'4.455"N	80°15'37.960"E	419848.466	1450291.757	4.832	On top of Bridge



SCALE 1 : 5,000

PROJECTION: The metric grid on this sheet is the UTM grid, Zone 44 N, WGS 84 Spheroid, M.S.L. Datum. All Dimensions are in Metres.

WARNING: This Map is not to be published, copied or reproduced in part or in whole either by photography or by any other means; should be kept in safe custody and handled by authorised persons only.

SHEET HISTORY: Base map compiled from the details/data provided by Greater Chennai Corporation (GCC) Surveyed between 1st March to 4th March 2021

Produced for the Project of Real Time Flood Forecasting and Spatial Decision Support System For Chennai by SECON-JBA under the World Bank funded Project Development Grant Fund (PDGF).

Roads: main; others; mud. Cart track.	Drains: stormwater; feeder with flow direction. Invert level.		CLIENT	GREATER CHENNAI CORPORATION (GCC) REPRESENTING COMMISSIONERATE OF REVENUE ADMINISTRATION AND DISASTER MANAGEMENT	
Temple. Chhatri. Shrine. Mosque. Idgah. Tomb. Church.	Canal. Outlet. Inundated area by previous flood.		FUNDED BY	PROJECT DEVELOPMENT GRANT FUND (PDGF) (Managed by Tamil Nadu Urban Infrastructure Financial Services Limited)	
Railways: broad gauge with station; bridge; metro.	Bridge with piers. Culvert. Flyover. Subway. Sewage line.		PROJECT	PLANNING, SETTING UP AND OPERATIONALIZING REAL TIME FLOOD FORECASTING SPATIAL DECISION SUPPORT SYSTEM FOR CHENNAI	
Boundary: state; district; taluk.	River: dry with water channel; with island & rocks. Tidal river.		TITLE	BASE MAP - STORM WATER DRAIN WARD No. 36, ZONE IV - TONDIARPET	
Boundary: CMA; zone; ward.	Streams: perennial; non perennial; Single line: defined. Tank.		PROJECT CONSULTANTS	SECON - JBA Consulting (India) (U.K.) JV	
Roads: without drain; with onside drain; with both side drain.	Rain water Harvesting. Stormwater pumping station.	SHEET No. 109 OF 114	SCALE 1:5000	DRAWING No. CFM/SWD/WARD-109	REV. 0
Road with reverse gradient drain.					
Spaced names: locality; village.					