

Roads: main; others; mud. Cart track.

Temple. Chhatr. Shrine. Mosque. Idgah. Tomb. Church.

Railways: broad gauge with station; bridge; metro.

Boundary: state; district; taluk.

Boundary: CMA; zone; ward.

Roads: without drain; with onside drain; with both side drain.

Road with reverse gradient drain.

Spaced names: locality; village.

ALWARPET *Kolothur*

Drains: stormwater; feeder with flow direction. Invert level.

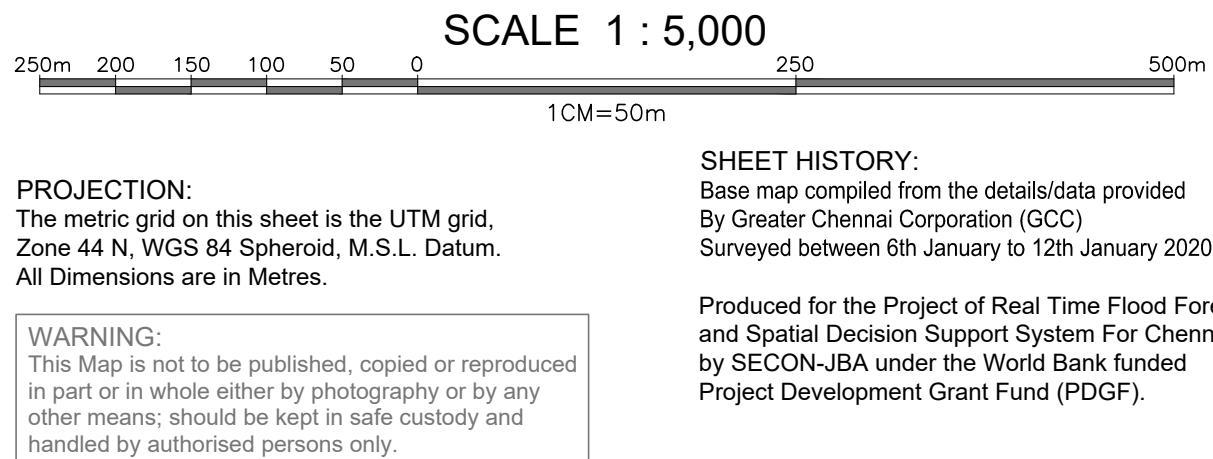
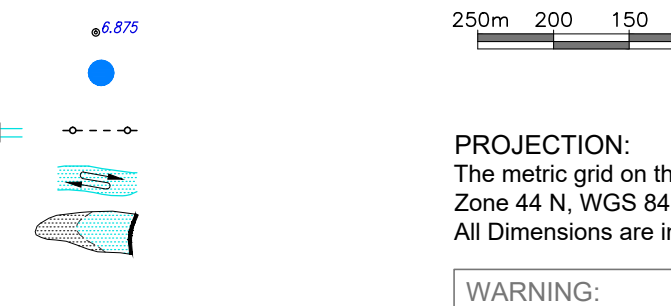
Canal. Outlet. Inundated area by previous flood.





Bridge with piers. Culvert. Flyover. Subway. Sewage line.

River: dry with water channel; with island & rocks. Tidal river.

Streams: perennial; non perennial; Single line: defined. Tank.

Rain water Harvesting. Stormwater pumping station.



CLIENT	<div></div> <div>GREATER CHENNAI CORPORATION (GCC) REPRESENTING COMMISSIONERATE OF REVENUE ADMINISTRATION AND DISASTER MANAGEMENT</div>			
FUNDED BY	<div></div> <div>PROJECT DEVELOPMENT GRANT FUND (PDGF) (Managed by Tamil Nadu Urban Infrastructure Financial Services Limited)</div>			
PROJECT	PLANNING, SETTING UP AND OPERATIONALIZING REAL TIME FLOOD FORECASTING SPATIAL DECISION SUPPORT SYSTEM FOR CHENNAI			
TITLE	BASE MAP - STORM WATER DRAIN WARD No. 145, ZONE XI - VALASARVAKKAM			
PROJECT CONSULTANTS	<div></div>	<div>SECON - JBA Consulting (India) (U.K.) JV</div>		<div>JBA CONSULTING</div>
SHEET No. 42 OF 114	SCALE 1:5000	DRAWING No.	CFM/SWD/WARD-42	REV. 0