

LIST OF POINTS						
SI No.	MANHOLE ID	DRAIN Closed(C) /Open(O)	MSL LEVEL		DRAIN DIMENSIONS	
			Drain Top(m)	Invert (m)	Road Edge (m)	Width (m)
1	A1	C	4.159	2.859	4.159	1.300
2	A2	C	3.626	2.426	3.859	1.300
3	A3	C	4.184	2.734	3.626	1.300
4	A4	C	4.586	2.586	4.103	0.880
5	B1	C	3.723	2.423		1.000
6	B2	C	4.299	2.799	3.573	1.200
7	B3	C	4.264	2.964	3.784	1.300
8	B4	C	4.103	2.703	4.299	1.200
9	B5	C	4.895	3.495	4.386	1.200
10	B6	C	5.281	3.881	4.595	0.500
11	B7	C	4.713	3.313	4.981	0.500
12	B8	C	4.788	3.388	2.998	1.100
13	B9	C	3.348	1.948	3.114	0.900
14	B10	C	3.475	2.275	4.463	1.100
15	B11	C	3.231	2.031	3.166	1.100
16	B12	C	3.314	2.214	3.081	1.100
17	B13	C	3.628	2.128	3.864	1.000
18	B14	C	3.316	2.116	3.119	1.100
19	B15	C	3.183	2.283	3.275	0.700
20	B16	C	3.198	2.298	2.983	0.700
21	B17	C	3.428	1.828	3.428	0.900
22	B18	C	3.410	2.210	3.228	1.000
23	B19	C	3.535	2.335	3.210	1.000
24	B20	C	3.349	1.849	3.335	0.900
25	B21	C	3.329	1.829	3.148	1.200
26	B22	C	3.050	1.650	3.129	1.080
27	B23	C	2.879	1.529	2.900	1.500
28	B24	C	2.991	1.641	3.048	1.200
29	B25	C	3.198	1.798	2.729	1.000
30	C1 (OL)	C	2.731	1.331	3.537	1.000
31	C2	C	3.237	2.037	3.855	1.000
32	C3	C	3.218	1.718	3.149	1.000
33	C4	C	3.207	1.707	3.068	0.900
34	C5	C	3.082	2.182	3.057	0.700
35	C6	C	2.985	2.085	3.082	0.700
36	C7	C	3.058	2.158	2.985	0.700
37	C8	C	3.119	2.219	3.058	0.700
38	C9	C	3.855	2.655	4.167	1.100
39	C10	C	4.717	3.517	3.578	1.100
40	C11	C	3.578	2.578	3.647	1.100
41	C12	C	3.426	2.526	2.731	1.000
42	C13	C	3.206	2.306	3.276	1.000
43	C14	C	3.495	2.395	3.302	0.800
44	C15	C	3.366	2.266	3.345	0.800
45	C16	C	3.265	2.065	3.006	0.800
46	C17	C	3.503	2.303	3.025	0.800
47	C18	C	3.335	2.235	3.126	0.800
48	C19	C	3.276	2.176	3.200	0.900
49	C20	C	3.250	2.250	3.029	0.800
50	C21	C	3.237	2.287	2.994	0.800
51	C22	C	3.114	2.114	4.997	0.800
52	C23	C	3.308	2.308	3.127	0.700
53	C24	C	3.474	2.454	3.088	0.800
54	C25	C	3.043	2.043	2.963	0.800
55	C26	C	3.049	2.049	2.963	0.800
56	C27	C	3.399	2.399	3.049	0.800
57	C28	C	3.402	2.302	3.085	0.800
58	D1 (OL)	C	-	-	5.390	-
59	D2	C	5.783	3.083	5.373	1.000
60	D3	C	5.373	3.273	5.373	1.000
61	D4	C	5.349	4.049	4.777	1.000
62	D5	C	5.027	4.007	4.491	1.000
63	D6	C	4.691	3.391	3.665	1.000
64	D7	C	4.791	3.691	5.472	0.900
65	D8	C	4.566	3.566	4.738	1.000
66	D9	C	4.217	3.217	4.566	1.300
67	E1 (OL)	C	5.390	4.790	-	1.320
68	E2	C	5.126	3.376	-	0.700
69	E3	C	5.472	4.022	5.092	0.800
70	E4	C	3.665	2.265	4.691	1.000
71	F1 (OL)	C	5.126	3.526	5.126	0.700
72	F2	C	5.160	3.210	5.126	0.700
73	F3	C	5.092	4.142	5.160	0.700
74	G1	C	-	-	-	-
75	G2	C	4.597	3.297	-	1.000
76	G3	C	4.553	1.803	4.597	1.000
77	H1	C	-	-	-	-
78	H2	C	5.942	5.142	-	1.300
79	H3	C	5.639	4.839	4.553	1.300
80	I1	C	-	-	-	-
81	I2	C	4.738	3.538	5.031	1.100

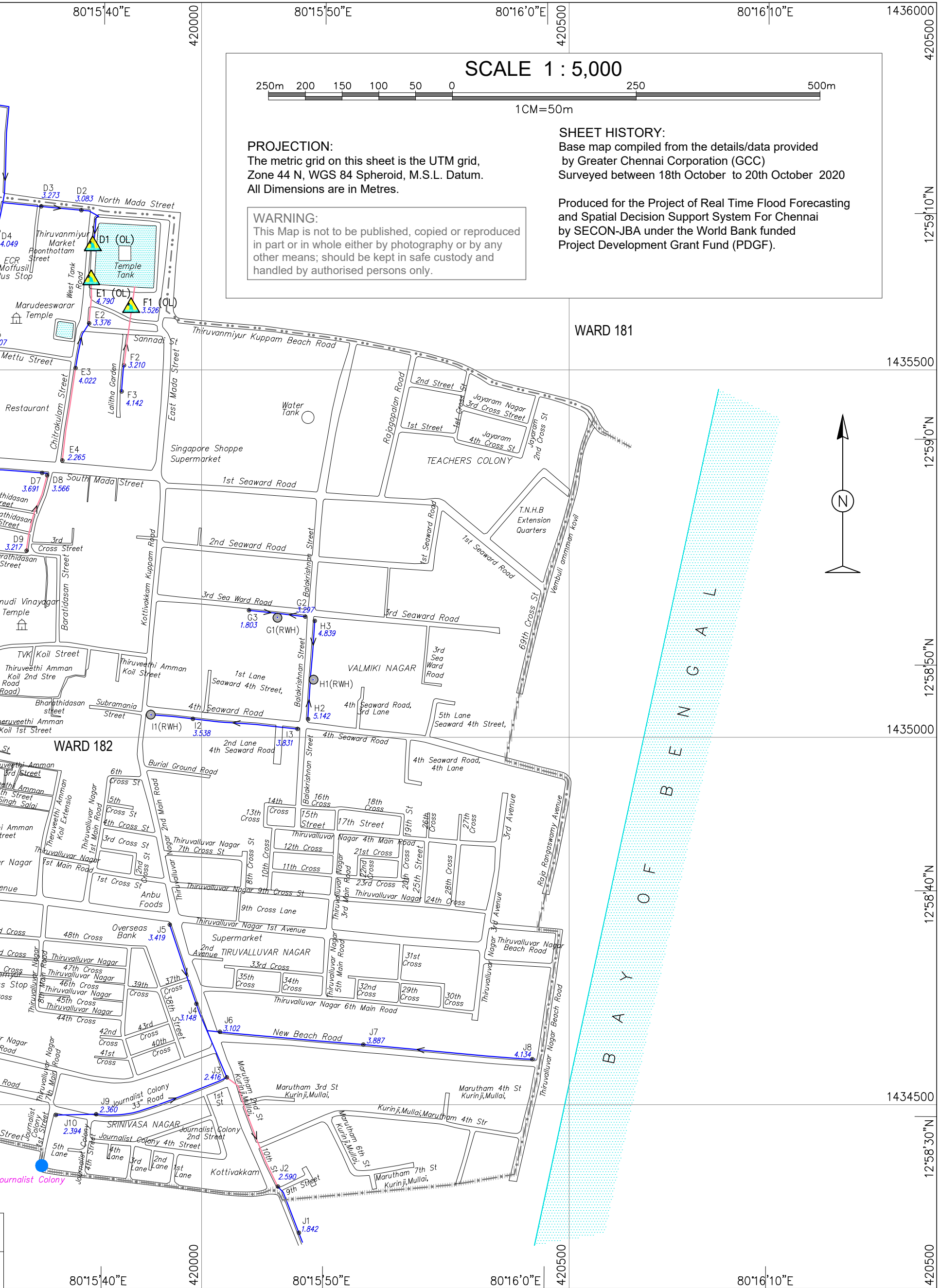
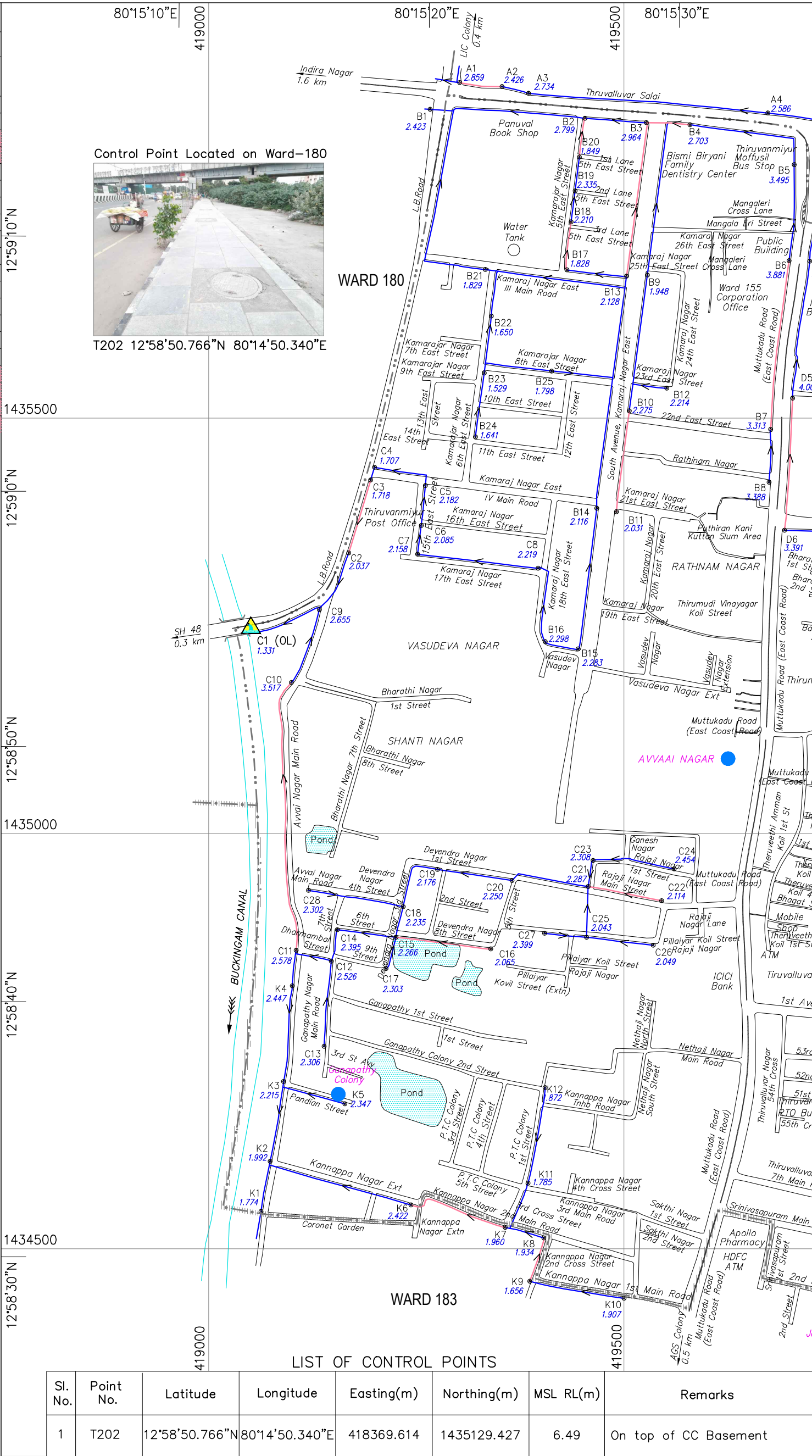
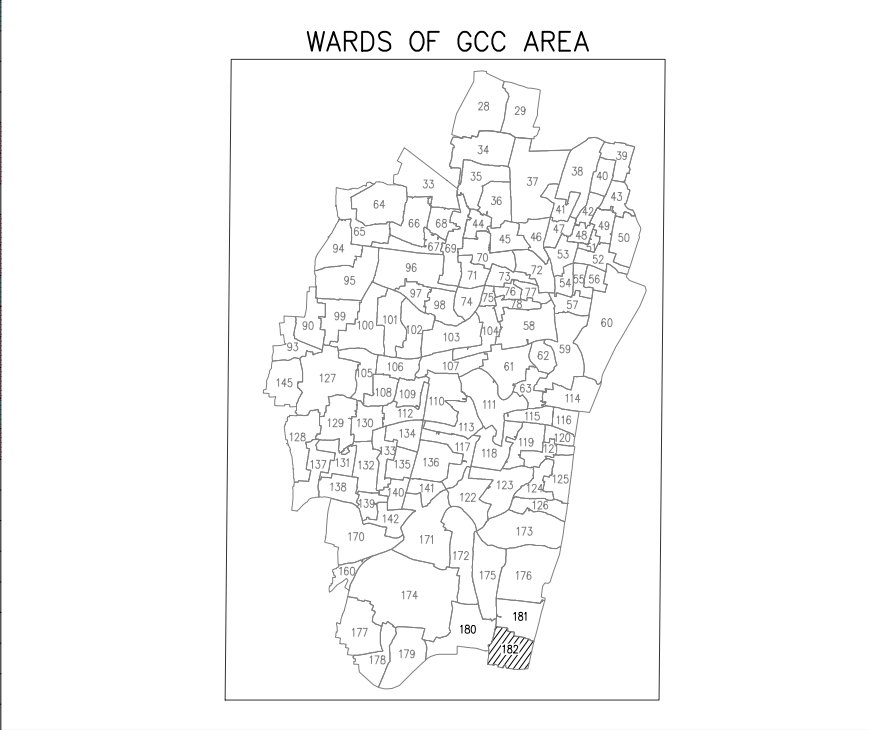
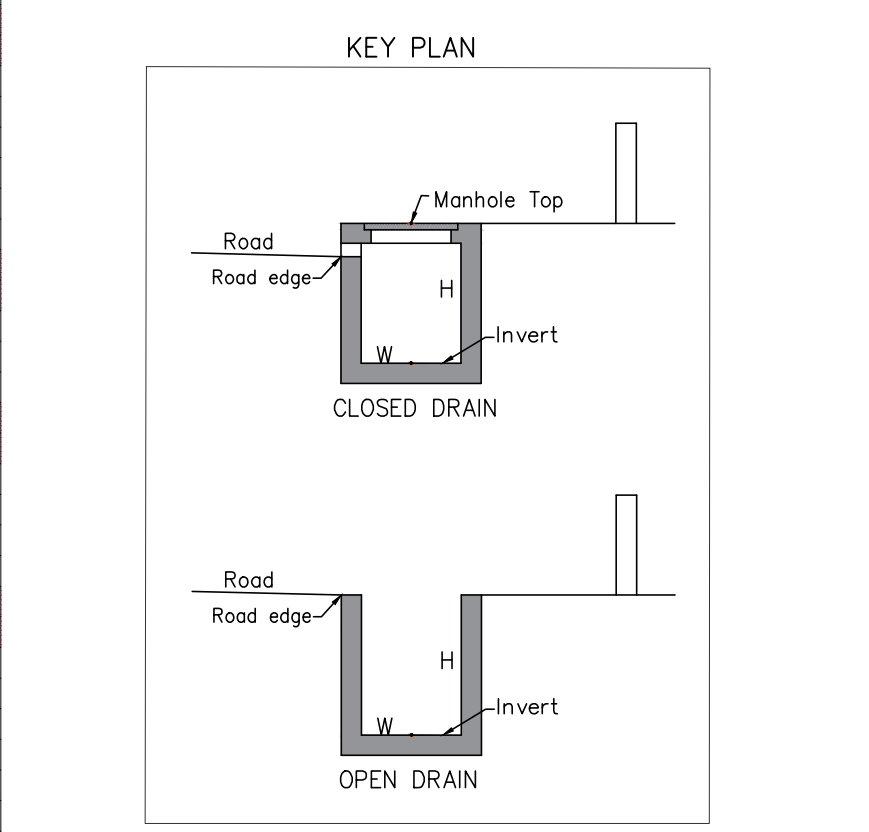
LIST OF POINTS						
SI No.	MANHOLE ID	DRAIN Closed(C) /Open(O)	MSL LEVEL		DRAIN DIMENSIONS	
			Drain Top(m)	Invert (m)	Road Edge (m)	Width (m)
82	I3	C	5.031	3.831	4.684	1.200
83	J1	C	3.542	1.842	3.816	1.200
84	J2	C	3.990	2.590	4.228	1.100
85	J3	C	3.816	2.416	3.660	1.100
86	J4	C	4.348	3.148	4.139	1.100
87	J6	C	3.702	3.102	3.542	1.000
88	J7	C	4.487	3.887	3.662	1.000
89	J8	C	4.619	3.419	5.558	1.100
90	J8	C	4.734	4.134	4.367	1.000
91	J9	C	3.660	2.360	3.614	1.100
92	J10	C	3.694	2.394	3.990	1.100
93	K1	C	2.974	1.774	3.192	1.100
94	K2	C	3.192	1.992	3.247	1.100
95	K3	C	3.415	2.215	3.126	1.100
96	K4	C	3.647	2.447	3.053	1.100
97	K5	C	3.247	2.347	3.415	0.800
98	K6	C	3.322	2.422	2.974	1.000
99	K7	C	3.260	1.960	3.322	1.000
100	K8	C	3.234	1.934	3.085	1.200
101	K9	C	3.056	1.656	3.307	1.000
102	K10	C	3.307	1.907	3.234	0.900
103	K11	C	3.085	1.785	3.172	1.000
104	K12	C	3.172	1.872	3.260	1.000

LEGEND

Drain Outlet

Drain With Reverse Gradient

"-" : Manhole's Inside not Accessible



Roads: main; others; mud. Cart track.

Temple. Chhatra. Shrine. Mosque. Idgah. Tomb. Church.

Railways: broad gauge with station; bridge; metro.

Boundary: state; district; taluk.

Boundary: CMA; zone; ward.

Roads: without drain; with oneside drain; with both side drain.

Road with reverse gradient drain.

Spaced names: locality; village.

Drains: stormwater; feeder with flow direction. Invert level.

Canal. Outlet. Inundated area by previous flood.

Bridge with piers. Culvert. Flyover. Subway. Sewage line.

River: dry with water channel; with island & rocks. Tidal river.

Streams: perennial; non perennial; Single line: defined. Tank.

Rain water Harvesting. Stormwater pumping station.

INDEX OF GCC & ULB's AREA

CLIENT	GREATER CHENNAI CORPORATION (GCC) REPRESENTING COMMISSIONERATE OF REVENUE ADMINISTRATION AND DISASTER MANAGEMENT		
FUNDED BY	PROJECT DEVELOPMENT GRANT FUND (PDGF) (Managed by Tamil Nadu Urban Infrastructure Financial Services Limited)		
PROJECT	PLANNING, SETTING UP AND OPERATIONALIZING REAL TIME FLOOD FORECASTING SPATIAL DECISION SUPPORT SYSTEM FOR CHENNAI		
TITLE	BASE MAP - STORM WATER DRAIN WARD No. 182, ZONE XIII - ADYAR NAGAR		
PROJECT CONSULTANTS	SECON - JBA Consulting (India) (U.K.) JV		
SHEET No. 32 OF 114	SCALE 1:5000	DRAWING No. CFM/SWD/WARD-32	REV. 0