

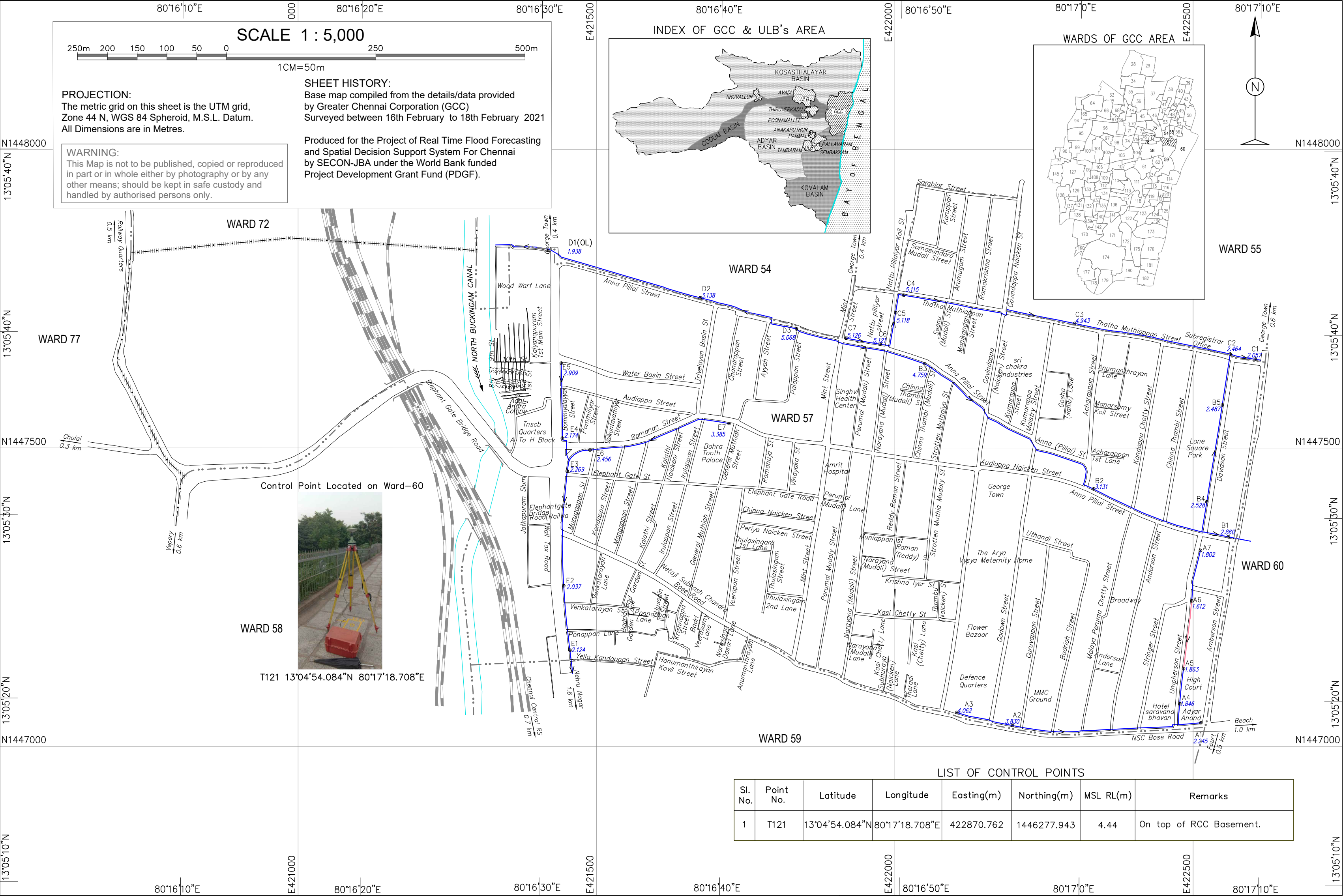
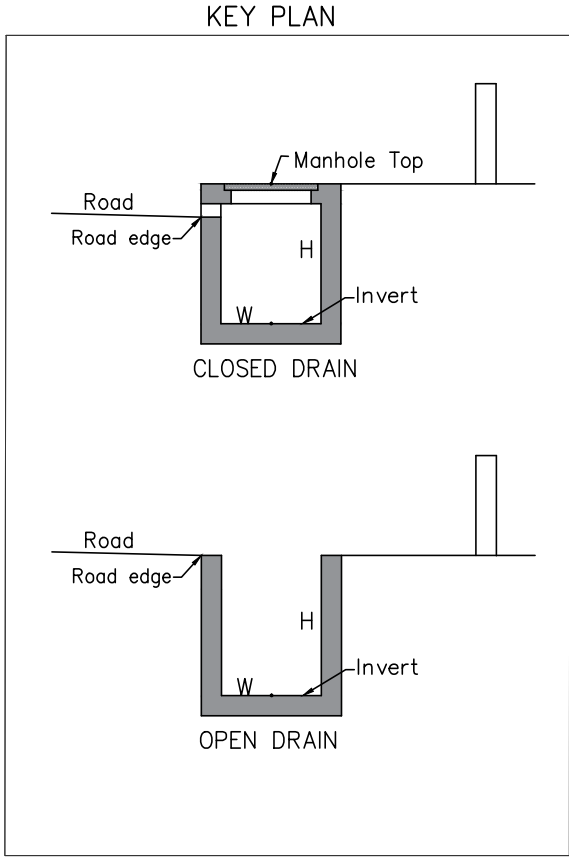
LIST OF POINTS							
SI No.	MANHOLE ID	DRAIN Closed(C) /Open(O)	MSL LEVEL			DRAIN DIMENSIONS	
			Drain Top(m)	Invert (m)	Road Edge (m)	Width (m)	Depth (m)
1	A1	C	3.245	2.245	3.033	0.700	0.860
2	A2	C	4.160	3.830	4.007	0.900	0.210
3	A3	C	4.462	4.062	4.316	1.000	0.240
4	A4	C	3.106	1.846	3.046	0.900	1.090
5	A5	C	3.173	1.863	3.151	0.850	1.210
6	A6	C	3.152	1.612	3.161	0.600	1.350
7	A7	C	3.402	1.802	3.515	0.600	1.450
8	B1	C	3.390	2.860	3.117	1.000	0.360
9	B2	C	4.031	3.131	3.973	1.000	0.720
10	B3	C	5.859	4.759	5.849	1.000	0.920
11	B4	C	3.528	2.528	3.495	3.495	0.600
12	B5	C	3.537	2.487	3.573	0.600	0.860
13	C1	C	3.407	2.057	3.276	0.760	1.170
14	C2	C	3.664	2.464	3.618	0.800	1.020
15	C3	C	5.643	4.943	5.590	1.000	0.550
16	C4	C	6.230	5.115	6.208	1.000	0.965
17	C5	C	6.198	5.118	6.098	1.000	0.930
18	C6	C	6.021	5.121	5.975	1.000	0.730
19	C7	C	5.896	5.126	5.909	1.000	0.590
20	D1(OL)	C	3.258	1.938	3.067	1.000	1.100
21	D2	C	4.418	3.138	4.259	1.000	1.130
22	D3	C	6.238	5.068	6.043	1.000	0.990
23	E1	C	3.374	2.124	3.202	0.800	1.120
24	E2	C	3.137	2.037	3.001	0.700	0.980
25	E3	C	3.019	2.269	3.196	0.900	0.560
26	E4	C	3.444	2.174	3.339	0.750	1.150
27	E5	C	3.589	2.909	3.387	0.800	0.550
28	E6	C	3.206	2.456	3.223	0.900	0.600
29	E7	C	4.775	3.385	4.719	0.900	1.220

LEGEND

Drain Outlet

Drain With Reverse Gradient

"—" : Manhole's Inside not Accessible



LIST OF CONTROL POINTS							
Sl. No.	Point No.	Latitude	Longitude	Easting(m)	Northing(m)	MSL RL(m)	Remarks
1	T121	13°04'54.084"N	80°17'18.708"E	422870.762	1446277.943	4.44	On top of RCC Basement.

Roads: main; others; mud. Cart track.

Temple. Chhatri. Shrine. Mosque. Idgah. Tomb. Church.

Railways: broad gauge with station; bridge; metro.

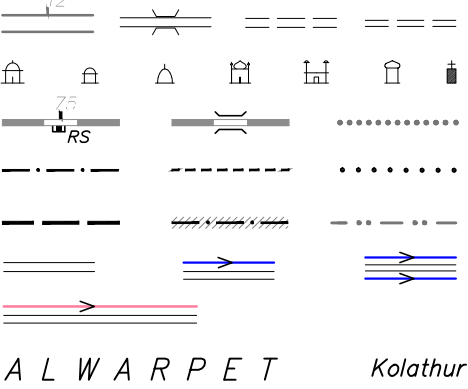
Boundary: state; district; taluk.

Boundary: CMA; zone; ward.

Roads: without drain; with oneside drain; with both side drain.

Road with reverse gradient drain.

Spaced names: locality; village.



Drains: stormwater; feeder with flow direction. Invert level.

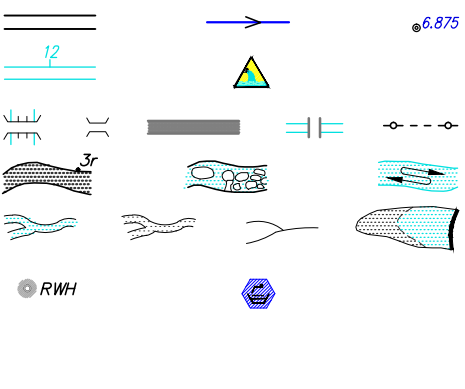
Canal. Outlet. Inundated area by privious flood.,

Bridge with piers. Culvert. Flyover. Subway. Sewage line.

River: dry with water channel; with island & rocks. Tidal river.

Streams: perennial; non perennial; Single line: defined. Tank.

Rain water Harvesting. Stormwater pumping station.



CLIENT



GREATER CHENNAI CORPORATION (GCC)
REPRESENTING COMMISSIONERATE OF REVENUE ADMINISTRATION
AND DISASTER MANAGEMENT

FUNDED BY

TNUFSL

PROJECT DEVELOPMENT GRANT FUND (PDGF)
(Managed by Tamil Nadu Urban Infrastructure Financial Services Limited)

PROJECT

PLANNING, SETTING UP AND OPERATIONALIZING REAL TIME

FLOOD FORECASTING SPATIAL DECISION SUPPORT SYSTEM FOR CHENNAI

TITLE

BASE MAP - STORM WATER DRAIN
WARD No. 57, ZONE V - ROYAPURAM

PROJECT CONSULTANTS



SECON - JBA Consulting
(India) (U.K.) JV

SHEET No.

SCALE

DRAWING No.

CFM/SWD/WARD-89

REV.

0