

Environmental Impact Assessment

October 2020

India: Bengaluru Metro Rail Project

Phase 2B (Airport Metro Line)

KR Puram to Kempegowda International Airport

Volume 16

Annex 7

NOTES

- (i) The fiscal year (FY) of the Government of India and its agencies ends on 31 March. "FY" before a calendar year denotes the year in which the fiscal year ends, e.g., FY2019 ends on 31 March 2019.
- (ii) In this report, "\$" refers to United States dollars.

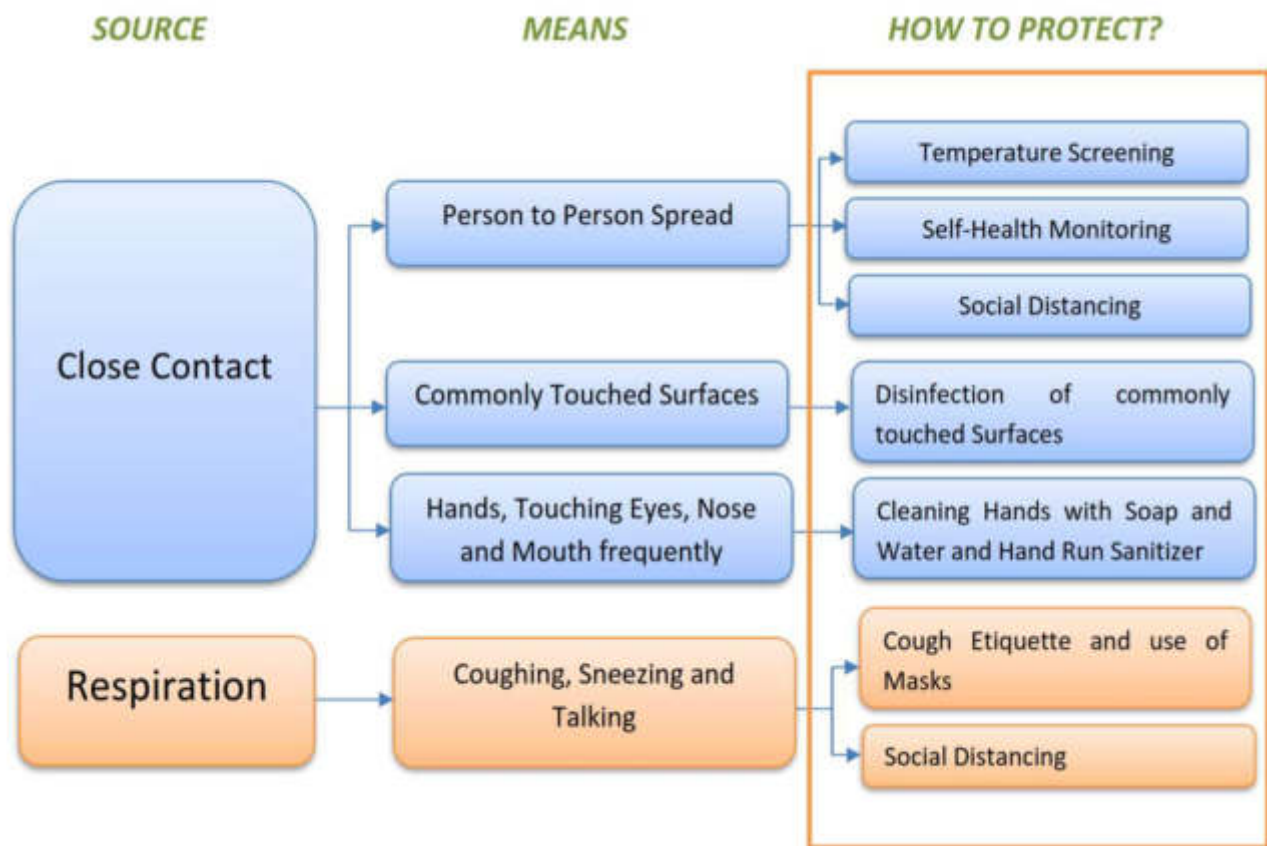
This environmental impact assessment is a document of the borrower. The views expressed herein do not necessarily represent those of ADB's Board of Directors, Management, or staff, and may be preliminary in nature. Your attention is directed to the ["terms of use"](#) section on ADB's website.

In preparing any country program or strategy, financing any project, or by making any designation of or reference to a particular territory or geographic area in this document, the Asian Development Bank does not intend to make any judgments as to the legal or other status of any territory or area.

Annexure – 7: Standard Operating Procedures (SOPs) and Guidelines for Construction Sites for COVID-19 Outbreak

In response to COVID-19 outbreak, BMRCL has defined the following Standard Operating Procedures (SOPs) and guidelines to ensure the health and safety of all workers and construction sites and in field offices of BMRCL. In addition to trained Supervisor(s), a Site Safety Representative (SSR) will be deployed at every site, to ensure the safety guideline is followed. Necessary trainings will be given in advance to Supervisors and SSRs, so that they can train the workers further.

The following diagram represents the way COVID-19 is transferred from one person to another and what could be done to prevent this¹.



¹ Source: NCRTC Guidelines and SoPs for resumption of regular works at various NCRTC field offices and construction sites after/during COVID-19

A. General Guidelines – Applicable to all

All Protocols including Emergency Response will be laid out. Identity Card will be issued to everyone entering site area. Periodic tailgate sessions will be arranged to review site protocols in view of highly dynamic scenario ensuring social distancing norms. During these sessions, everyone including workers will be informed about the safety guidelines and important updates. Necessary arrangements for announcements shall be made at every site.



All employees, workers, visitors, contractors, vendors and any others are highly encouraged to install the Aarogya Setu application on their mobile phones. Mobile bluetooth and locating services must always be switched on for tracing information

Any person that has been in contact with a COVID-19 infected person shall stay home for mandatory self-quarantine and inform the local government authorities.



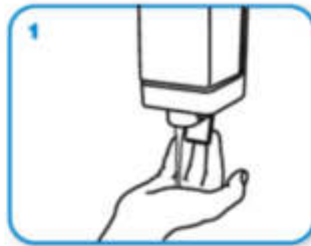
Social distancing needs to be maintained at every workplace, site and office as per the guidelines issued by MoHFW. Large gatherings or meetings of 10 or more people are discouraged. Seating at least 6 feet away from others on job sites and in gatherings, meetings and training sessions. Handshakes are strictly prohibited.

Practice frequent hand washing, even if hands are visibly clean. Wash hands with soap and water for 40 seconds, as shown in the World Health Organization's guideline on how to properly wash your hands. When hand washing isn't possible, alcohol-based hand sanitizer with greater than 70% alcohol should be used.





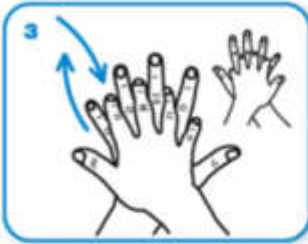
Wet hands with water



apply enough soap to cover all hand surfaces.



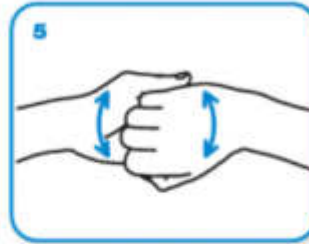
Rub hands palm to palm



right palm over left dorsum with interlaced fingers and vice versa



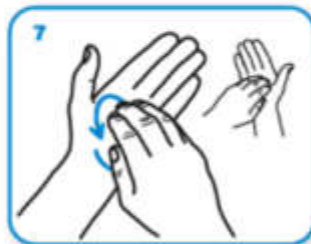
palm to palm with fingers interlaced



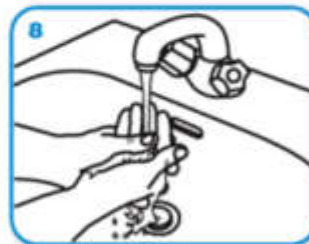
backs of fingers to opposing palms with fingers interlocked



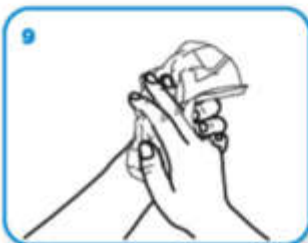
rotational rubbing of left thumb clasped in right palm and vice versa



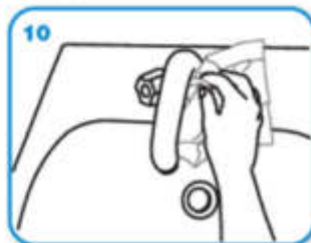
rotational rubbing, backwards and forwards with clasped fingers of right hand in left palm and vice versa.



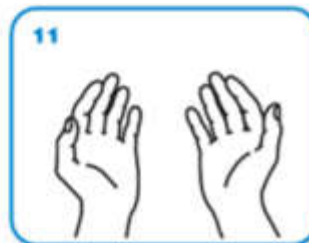
Rinse hands with water



dry thoroughly with a single use towel



use towel to turn off faucet



...and your hands are safe.

Provision for hand wash & sanitizer (touch free recommended) will be made at all entry and exit points and common areas (including at distant locations like higher floors). Everyone will be required to wash & sanitize his/her hands before entering the site. Same procedure to be followed after exiting the premise. Sufficient quantities of all the items should be available at the site.



Mandatory thermal scanning of everyone entering and exiting a construction site will be done for fever with thermal scanners. If anyone leaves and re-enters the site during the shift, re-screening of the individual will be done prior to re-entry into the work site. If the body temperature is more than 37.5 °C the person is not permitted entry to the site and is asked to go back home.

Everyone entering site area shall mandatorily wear face mask at all times. Face mask must fully cover both nose and mouth. Hand gloves should be used by the workers who are handling material coming from outside. Re-usable equipment should be thoroughly cleaned and should not be shared with others.



NO SPITTING

There will be strict ban on Gutka, Tambaku, Paan etc. on site. Spitting shall be strictly prohibited and shall be punishable with a fine.

Food should be consumed at designated areas only ensuring social distancing. Common sitting arrangements should be removed. Post lunch, waste should be disposed by individual in designated bins and area should remain clean.



Entire construction site including site office, labour camp, canteens, pathways, toilets, entry / exit gates will be disinfected on daily basis and between each shift. Housekeeping team should be provided with necessary equipment and proper PPEs. Areas with a probability of bigger gathering, e.g. cleaning area, toilets etc. should be identified and all arrangements should be made to ensure social distancing.

There will be total ban on non-essential visitors at sites (including from Head office staff, consultants etc.).



Hospital/clinics in the nearby area, which are authorized to treat COVID-19 patients, should be identified and list should be available at Site all the time. Medical insurance is mandatory for every worker. A doctor will be present periodically (at least once a week) at site on allotted time for any medical assistance.

Appropriate signage at construction site spelling out safety practices, including DO's and DON'T's for COVID-19, in the language which is understood by all.



DOs



DON'Ts



For any confusion, clarification and update, everyone should approach designated authority or rely on authentic source. Do not believe rumours and don't spread them.

B. Guidelines for workers

On day 0, before resuming the work on sites post lockdown period, mandatory medical check-up will be arranged for all workers. The workers coming from outside should observe home-quarantine for at least 14 days as per the guidelines issued by MoHFW. Only medically fit workers will be deployed at site and medical assistance will be arranged for unfit workers. Medical check-up camp should be arranged every month.

Key point: No hugs, handshakes or high fives

A unique photo identity card with serial number will be issued to all the workers and their family members staying at site. Proper record of all these workers will be maintained. They will not be allowed to go outside site area. All the essential items will be made available to them at site only. If necessary, they can go out wearing face mask, after informing supervisor. No outside worker will be allowed to stay at site without following proper procedure and instructions.

Key point: No ID, no entry

Start time on site will be staggered to avoid congestion at the entry gates. Workplaces shall have a gap of one hour between shifts and lunch breaks will be staggered to ensure social distancing. Number of workers working at a particular time / place will be reduced by making arrangements for different shifts / areas. Accordingly, additional staff such as security guards, supervisors etc. will be deployed.

Key point: Prevent standing in a group, maintain distance while waiting in line

As in most cases, workers reside at the sites, hence no travel arrangements are required for them. The workers staying outside (which are always nearby) should reach at the site either by walking or by their individual mode of transport (bicycle, two-wheeler etc.) while maintaining social distancing and wearing a face mask.

During attendance, training and other sessions, social distancing guidelines will be followed along with provision of no-touch attendance. Maintain at least 1 meter but preferably 2 meter distance from persons, especially with those having flu-like symptoms, during interaction.

All workers may be advised to take care of their own health and look out for respiratory symptoms/fever and, if feeling unwell, should leave the workplace immediately after informing their reporting officers. They should observe home-quarantine as per the guidelines issued by MoHFW and should immediately inform the nearest health centre or call 011-23978046.

Key point: If you are feeling sick, report to supervisor and consult a doctor

Workers should not shake hands when greeting others and while working on the site.

Mandatorily wear face masks while working on site. Adopt good personal hygiene practices. Sneeze in a handkerchief, tissue or the inner side of your elbow. Properly dispose used tissues immediately.

Key point: Wear your face mask, covering both nose and mouth

At all times maintain social distancing. When standing in line, wait until the person in front of you moves. Don't enter in the gaps between persons. Avoid standing in a group. Not more than 2/4 persons (depending on size) should be allowed to travel in lifts or hoists. Use of staircase for climbing should be encouraged. Do not enter crowded spaces, for instance a busy rest room, but wait until there is space.

Key point: At all times maintain social distancing with a minimum of 1 meter

Workers should clean hands frequently by washing them with soap and water for at least 40 seconds. When hand washing isn't possible, alcohol-based hand sanitizer with greater than 70% alcohol should be used. Avoid touching your eyes, nose, or mouth with unwashed hands.

Key point: Regularly wash your hands with water and soap, even if they appear to be clean

Cleaning staff must wear PPEs when disinfecting site office, labour camp, canteens, pathways, toilets, entry / exit gates, etc. Touch points (light switch, door handle, press buttons etc) need to be disinfected every hour. Maintain floor markings at site offices to ensure social distancing.

Workers should not share their belongings like food, water bottles, utensils, mobile phones etc. with others. The utensils should be washed properly post use at designated place.

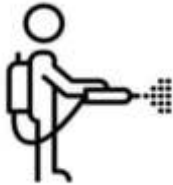
Key point: Don't share your personal items or utensils

Post work, workers should change their clothes before leaving the site and clothing should not be shook out. Wash your hands again after reaching camp and before and after touching food, currency notes or coins, etc. Every day disinfect things that get touched a lot, including doorknobs, light switches, remote controls, phones, etc.

Key point: Sanitize your living environment

C. Guidelines for Material, Tools, Machinery, Vehicles etc.

At all point of time, easy access to parking should be ensured since public transit is limited.



All vehicles and machinery entering the premise should be disinfected by spray mandatorily.

Wipe down interiors and door handle of machines or construction vehicles, the handles of equipment and tools that are shared, with disinfectant prior to using.



Vehicles for multiple persons must be equipped with markings indicating the safe seating arrangements

All construction material arriving at site should be left idle for 3 days before use to ensure safe usage.



Non-touch garbage bins with biodegradable garbage bag should be installed for waste collection at all common access areas. Proper disposal of garbage bags along with daily cleaning and sanitization of bins should be ensured.

Annexure: Do's and Don'ts

Do's

- To maintain personal hygiene and physical distancing
- To practice frequent hand washing. Wash hands with soap and water or use alcohol-based hand rub. Wash hands even if they are visibly clean.
- To cover your nose and mouth with handkerchief or tissue while sneezing and coughing
- To throw used tissues into closed bins immediately after use
- To maintain a safe distance from persons during interaction, especially with those having flu-like symptoms
- To sneeze in the inner side of your elbow
- To take your temperature regularly and check for respiratory symptoms
- To see a doctor if you feel unwell (fever, difficulty in breathing and coughing). While visiting the doctor, wear a mask to cover your mouth and nose
- For any fever/flu-like symptoms, please call State helpline number or the 24/7 helpline number of the Ministry of Health and Family Welfare at 011-23978046

Don'ts

- Don't shake hands
- Don't have a close contact with anyone, if you're experiencing cough and fever
- Don't touch your eyes, nose and mouth
- Don't sneeze or cough into the palms of your hands
- Don't spit in public
- Don't travel unnecessarily, particularly to any affected region
- Don't participate in large gatherings, including sitting in groups at canteens
- Don't visit gyms, clubs or any other crowded places
- Don't spread rumours or panic