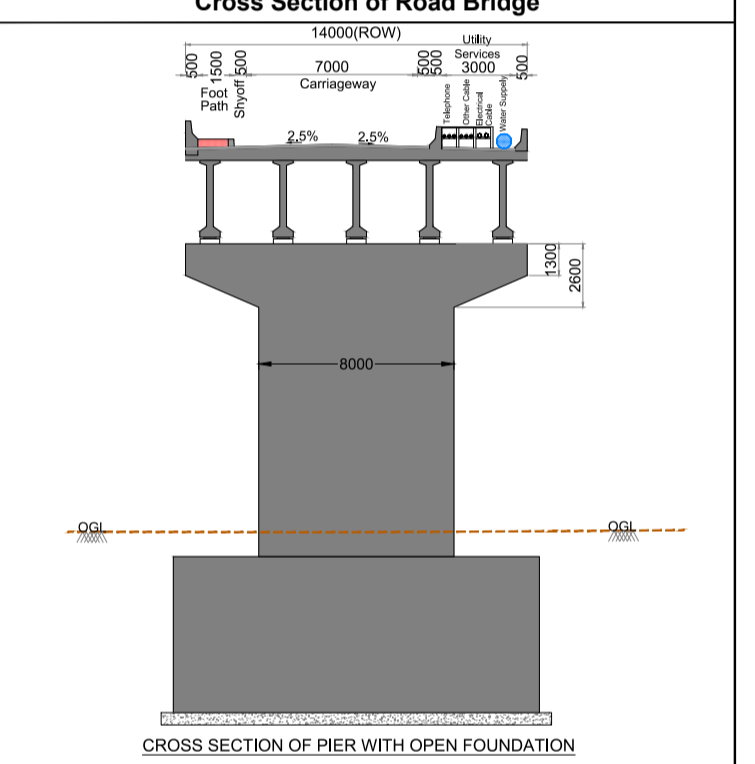
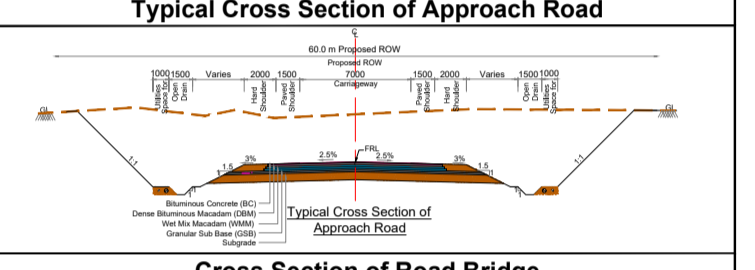
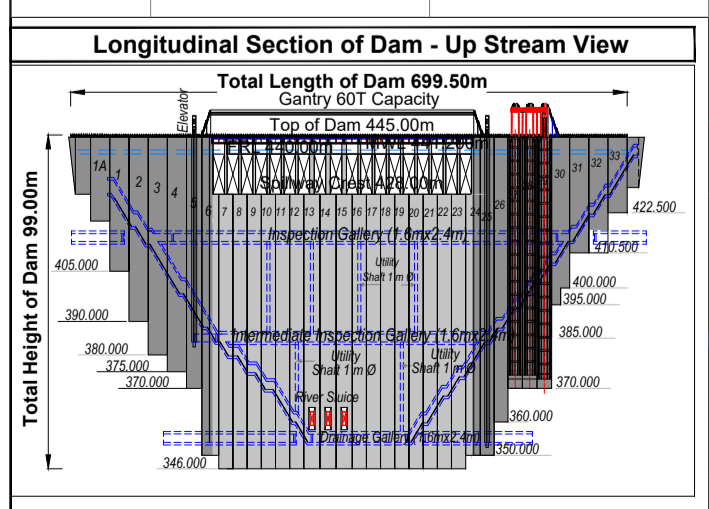


- LEGEND**
- Compound wall, Wire fence
 - Pylon, Transformer, Power line, Telegraph/Telephone line
 - Roads: Metalled With KM Stone, Unmetalled, Cart track, Foot path
 - Railway with KM Stone, Broad gauge, Kilometer Stone
 - Building: Permanent, Temporary, Under construction, Village limit
 - Stream: Double line, Sing line, Canal, Tank, Ponds
 - Bridges with piers, Culvert, Sign Board, Lamp post, Optimum Fibre Cable
 - Wells: Lined, Unlined, Tube, Bore, Pump house, Temple, Mosque, Idgah, Graves
 - Embankment, Cutting With Relative Height, Quarry, Gate
 - Drains: Large, Small, Field channel, Cultivation limit
 - Boulders, Rocky ground, Sheet rock
 - Contour with value, Field bund, Tree, Grass
 - Boundary: Tahsil, Village, Reserved Forest, Survey Number
 - Heights: Global Positioning System, Control Points, Traverse Station, Bench Mark, GPSA, CPO, TS, TBM-18
- NOTES**
- 1) All Dimensions Are In Metres And Reduced Levels Are In Metres.
 - 2) Do Not Scale The Drawing, written Dimensions Only Shall Be Followed.



| No. | Hydro Power Components | Points |
|-----|--|--------|
| 1 | Ø 6.50m Steel Penstock Pipe | 01 |
| 2 | Ø 5.6m Vertical Pressure Shaft | 02 |
| 3 | Ø 5.60m Lower Horizontal Pressure Shaft | 03 |
| 4 | Ø 6.5m Lower Horizontal Pressure Shaft | 04 |
| 5 | Ø 3.25m Lower Horizontal Pressure Shaft | 05 |
| 6 | Adit To Pressure Shaft Bottom 'D' Shape Ø 6.0m L=475.00m | 06 |
| 7 | Power House Cavern | 07 |
| 8 | Main Access Tunnel Ø 10.0m, 'D' Shape L=65.00m | 08 |
| 9 | Ø 6m 'D' Shaped Bus Duct | 09 |
| 10 | Ø 8m 'D' Shaped Bus Duct | 10 |
| 11 | Transformer Cavern | 11 |
| 12 | Surge Gallery | 12 |
| 13 | Ø 6.0m 'D' Shaped Ventilation Tunnel | 13 |
| 14 | Ø 4m 'D' Shaped Escape Tunnel | 14 |
| 15 | Ø 6m 'D' Shaped Ventilation Cum Cable Tunnel | 15 |
| 16 | Ø 6m Cable Shaft El.340.00m To El.385.00m | 16 |
| 17 | Switch Yard El.385.00m | 17 |
| 18 | Ø 6m 'D' Shaped Ventilation Tunnel To Surge Gallery | 18 |
| 19 | Tail Race Tunnel Ø 9.50m Horse Shoe Type L=2150m | 19 |
| 20 | Ø 6m 'D' Shaped Adit To Tail Race Tunnel L=750.00m | 20 |
| 21 | Tail Race Tunnel | 21 |
| 22 | Tail Race Outlet Portal | 22 |



FOR DPR PURPOSE ONLY

| | | | | | |
|------|--------------|----------|------|------|------|
| 0 | For Approval | 03.01.19 | NK | SN | NR |
| Rev. | Description | Date | Drw. | Dsg. | Chk. |

CLIENT
CAUVERY NEERAVARI NIGAMA LIMITED
 (A Government of Karnataka Enterprise)
 Regd. Office: HOUSING BOARD BUILDING,
 SARASWATHI PURAM
 MYSORE - 570 009

CONSULTANT
EIT-DGC JV
 # 1149, 26th Main, Jayanagar 4th 'T' Block,
 Bangalore-560 041, India.
 Ph. +91.80.40914714, Fax: +91.80.26650912
 info@eitech.in • www.eitech.in

PROJECT TITLE
**MEKEDATU BALANCING RESERVOIR
 CUM DRINKING WATER PROJECT**

DRAWING TITLE
MASTER PLAN

| | | | | | | |
|-------------|---------------------------|-----------|------|------|----------|----------------|
| Date | Drw. | Dsg. | Chk. | App. | Scale | Drawing Status |
| 03.01.2019 | NK | SN | NR | NR | 1:10,000 | FOR APPROVAL |
| Project No. | Drawing No. | Sheet No. | Rev. | | | |
| 1328X | EIT-1328X-WRE-XX-MTP-A012 | 01 of 01 | 0 | | | |

| | |
|---|--|
| Consultant EIT - DGC JV Bangalore | Executive Engineer CNNL, Manchanabele Project Division Ramanagara |
| Superintending Engineer K.R.S Modernization & Medium irrigation project circle, Mandya | Chief Engineer CNNL, Irrigation (South) Public Office Building Mysore |