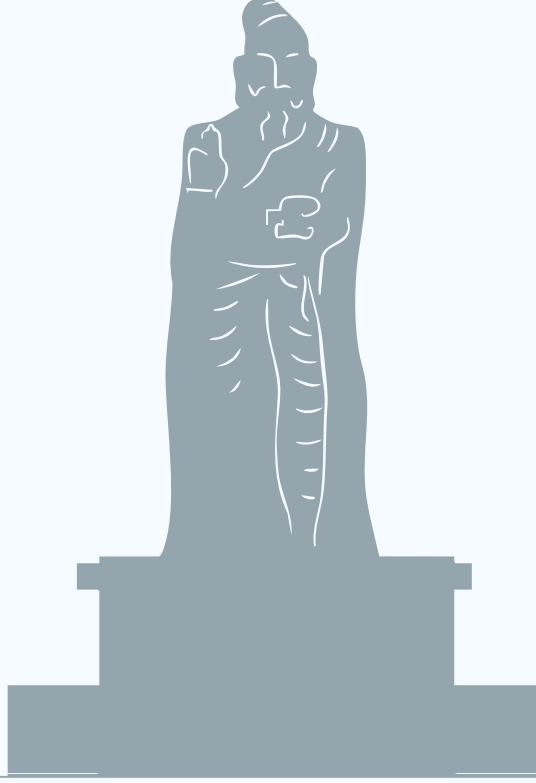




**GREATER CHENNAI CORPORATION**

**CITIZEN'S GUIDE  
TO BUDGET 2025-26**





## திருக்குறள்

இயற்றலும் ஈட்டலுங் காத்தலுங் காத்த  
வகுத்தலும் வல்ல தரசு.

அதிகாரம்: இறைமாட்சி  
குறள் எண்: 385



# BUDGET SIZE OF GCC

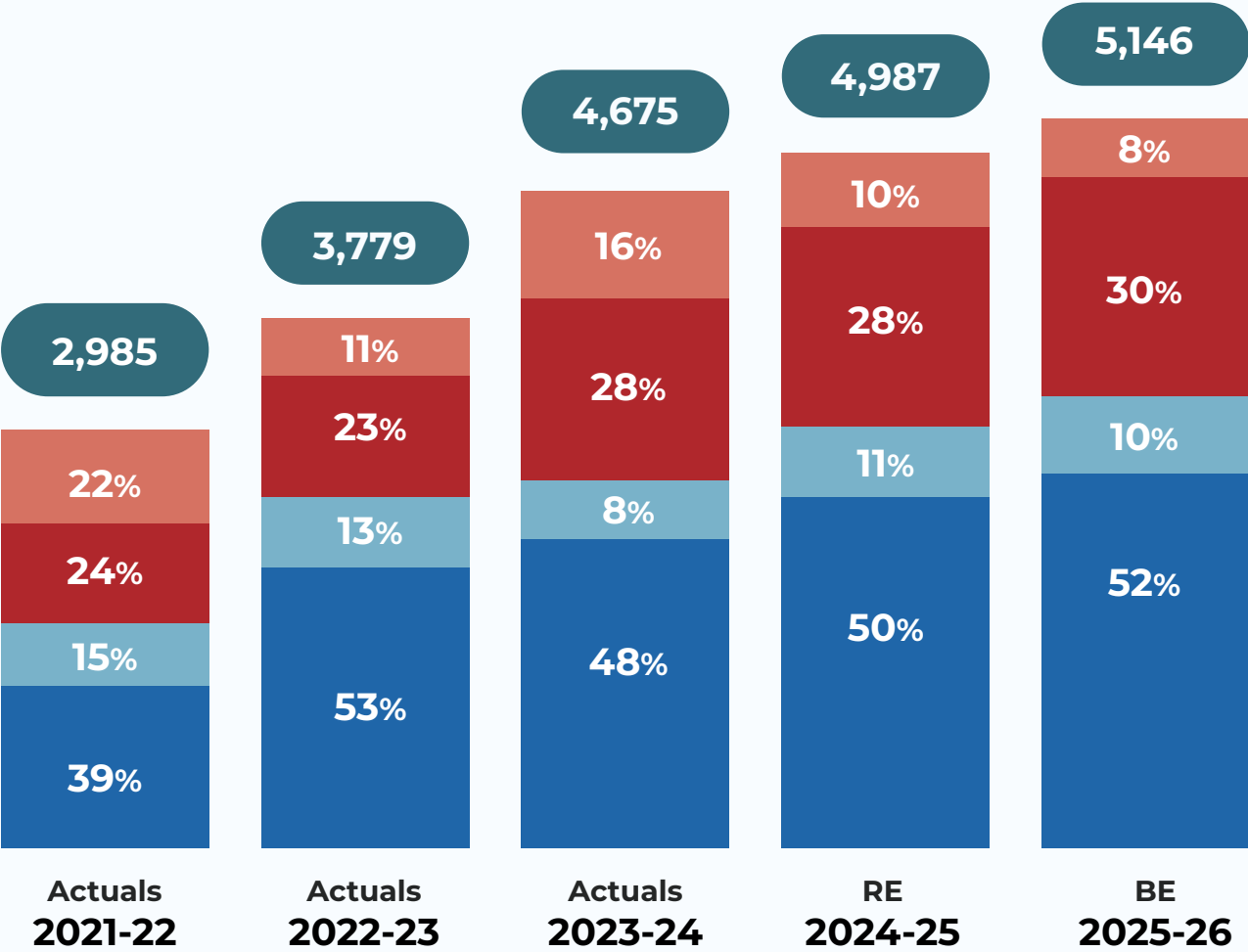
TOTAL RECEIPTS  
**Rs.8,267.17 Crore**

TOTAL EXPENDITURE  
**Rs.8,404.70 Crore**



# TRENDS IN REVENUE RECEIPTS

RUPEES IN CRORE

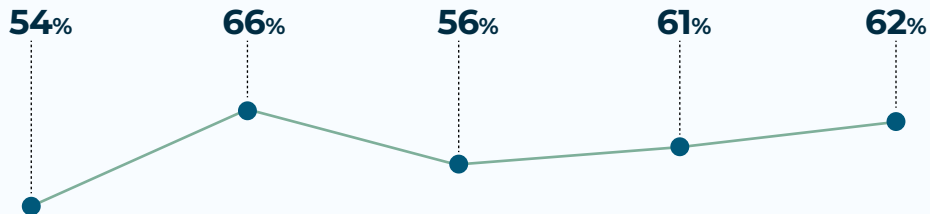


■ Tax Revenue ■ Non Tax Revenue ■ Assigned Revenue ■ Revenue Grants

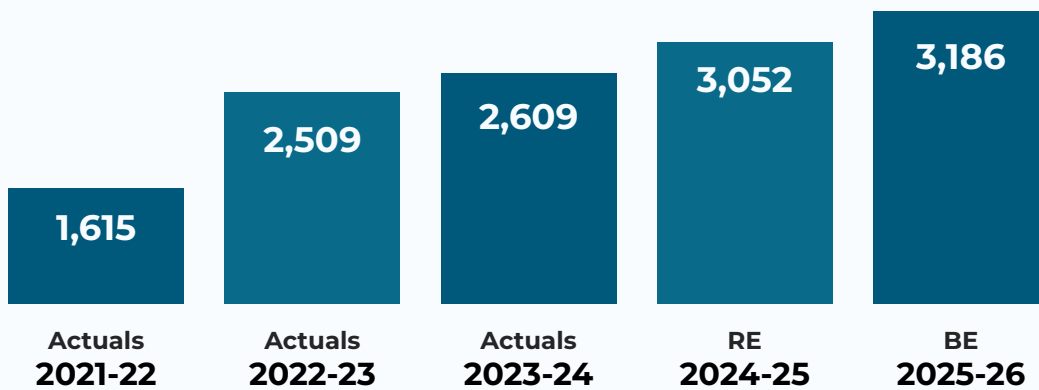


# TRENDS IN OWN SOURCE REVENUE

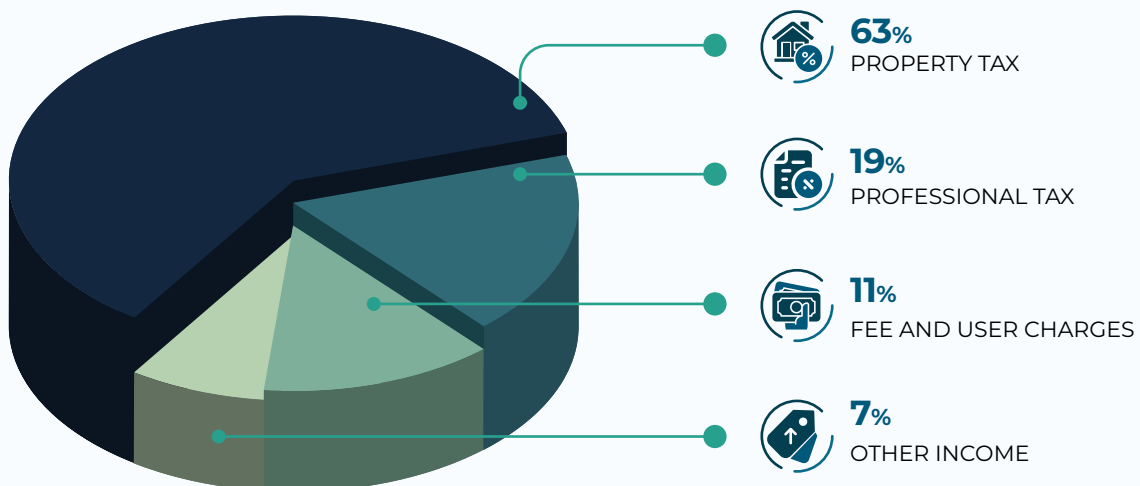
## % OF TOTAL REVENUE RECEIPTS



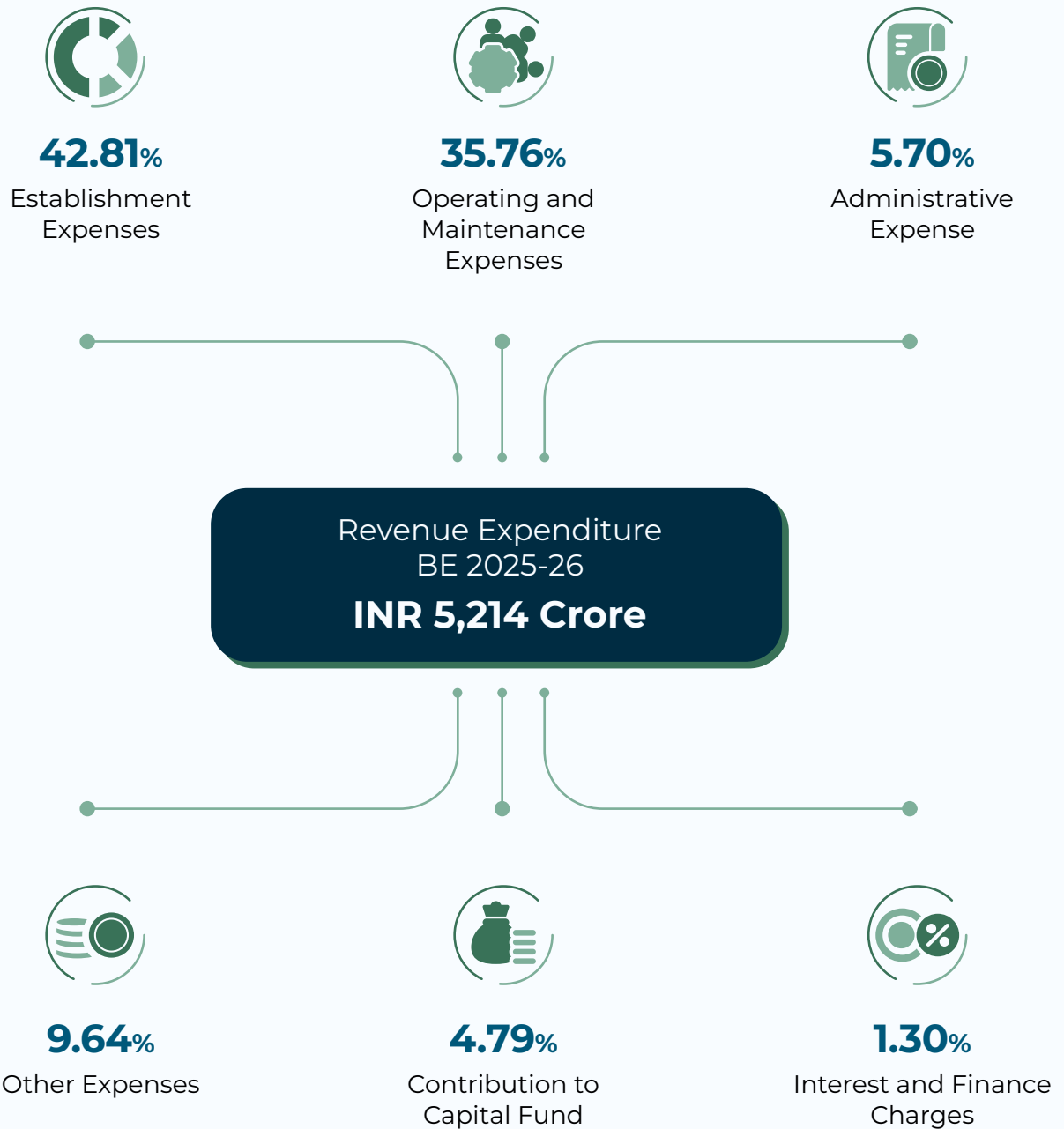
## OWN SOURCE REVENUE OVER YEARS (RUPEES IN CRORE)



## COMPOSITION OF OWN SOURCE REVENUE - BE 2025-26



# REVENUE EXPENDITURE



# TRENDS IN REVENUE DEFICIT

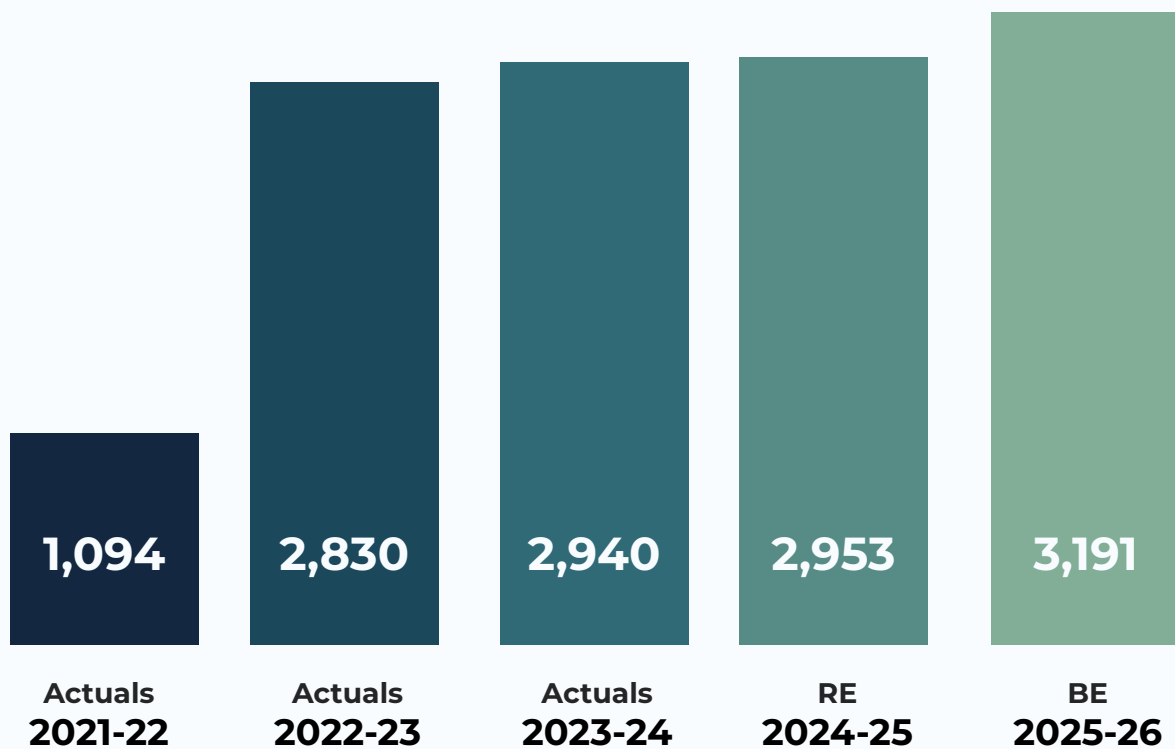
## RUPEES IN CRORE



- Revenue deficit/surplus ((excluding) transfer for capital expenditure)
- Revenue deficit/surplus ((including) transfer for capital expenditure)

# TRENDS IN CAPITAL EXPENDITURE

RUPEES IN CRORE





# ALLOCATION OF TOTAL CAPITAL EXPENDITURE - INR 3,191 CR



**1,032 cr**

Storm Water  
Drainage



**628 cr**

Bus Route Roads



**413 cr**

Buildings



**352 cr**

Solid Waste  
Management



**281 cr**

Zones



**179 cr**

Special Projects



**164 cr**

Bridges

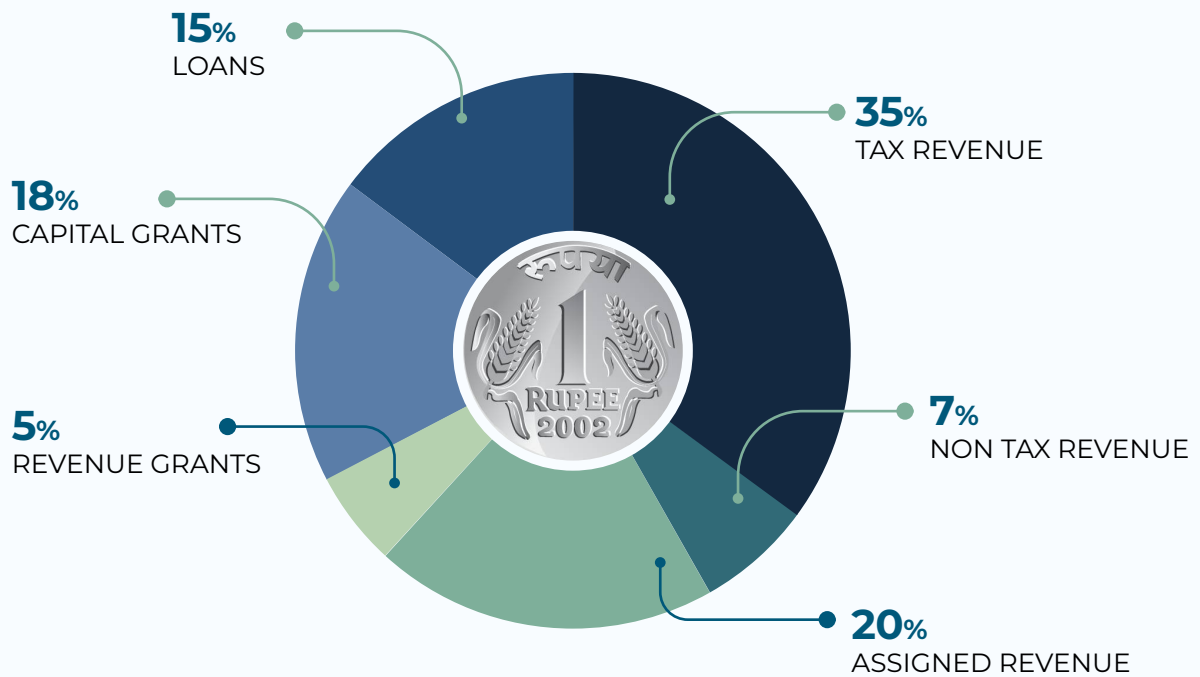


**142 cr**

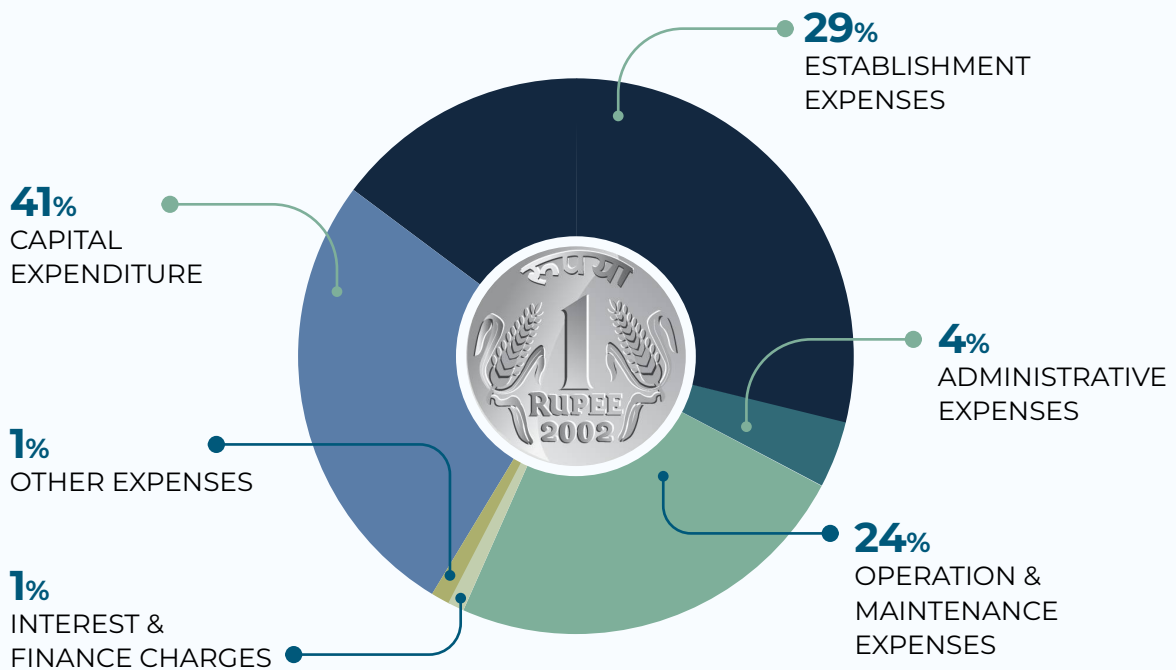
Others



# HOW ONE RUPEE IS MOBILISED\*



# HOW ONE RUPEE IS SPENT\*



\*Excludes internal transfers from Revenue account to Capital account

# GLOSSARY

## **a) Revenue Receipts**

This refers to the total receipts received on account of taxes, duties and fee, fines and penalties levied by the Urban Local body and State transfers on account of assigned revenue and other revenue grants.

## **b) Revenue Expenditure**

This includes expenditure on account of salaries, pensions and other retirement benefits, operations and maintenance, establishment expenses, interest on outstanding loans, and transfers to capital, elementary and mayor development funds among others.

## **c) Capital Expenditure**

This refers to expenditure towards creation of fixed assets such as Roads and Bridges, schools, Storm Water Drains, Buildings etc.

## **d) Revenue Surplus/ Deficit**

The excess of revenue receipts over the revenue expenditure is a termed as revenue surplus. If revenue expenditure exceeds revenue receipts, it is called a revenue deficit.

**BE** - Budget Estimate

**RE** - Revised Estimate

# #HereToServe

NOTE: The complete Budget Documents can be viewed / downloaded from  
<http://www.chennaicorporation.gov.in/>

